

BUDGET REQUEST FOR FISCAL YEAR ENDING JUNE 30, 2019

445-00

MS State Univ - Water Resources Research Institute

P. O. Box 9547

Dr. Mark E. Keenum



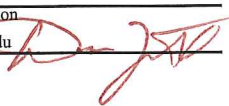
AGENCY

ADDRESS

CHIEF EXECUTIVE OFFICER

	Actual Expenses June 30,2017	Estimated Expenses June 30,2018	Requested For June 30,2019	Requested Over/(Under) Estimated	
				AMOUNT	PERCENT
I. A. PERSONAL SERVICES					
1. Salaries, Wages & Fringe Benefits (Base)					
a. Additional Compensation					
b. Proposed Vacancy Rate (Dollar Amount)					
c. Per Diem					
Total Salaries, Wages & Fringe Benefits					
2. Travel					
a. Travel & Subsistence (In-State)					
b. Travel & Subsistence (Out-Of-State)					
c. Travel & Subsistence (Out-Of-Country)					
Total Travel					
B. CONTRACTUAL SERVICES (Schedule B)					
a. Tuition, Rewards & Awards					
b. Communications, Transportation & Utilities					
c. Public Information					
d. Rents					
e. Repairs & Service					
f. Fees, Professional & Other Services					
g. Other Contractual Services					
h. Data Processing					
i. Other					
Total Contractual Services					
C. COMMODITIES (Schedule C)					
a. Maintenance & Construction Materials & Supplies					
b. Printing & Office Supplies & Materials					
c. Equipment, Repair Parts, Supplies & Accessories					
d. Professional & Scientific Supplies & Materials					
e. Other Supplies & Materials					
Total Commodities					
D. CAPITAL OUTLAY					
1. Total Other Than Equipment (Schedule D-1)					
2. Equipment (Schedule D-2)					
b. Road Machinery, Farm & Other Working Equipment					
c. Office Machines, Furniture, Fixtures & Equipment					
d. IS Equipment (Data Processing & Telecommunications)					
e. Equipment - Lease Purchase					
f. Other Equipment					
Total Equipment (Schedule D-2)					
3. Vehicles (Schedule D-3)					
4. Wireless Comm. Devices (Schedule D-4)					
E. SUBSIDIES, LOANS & GRANTS (Schedule E)	363,051	357,031	364,172	7,141	2.00%
TOTAL EXPENDITURES	363,051	357,031	364,172	7,141	2.00%
II. BUDGET TO BE FUNDED AS FOLLOWS:					
Cash Balance-Unencumbered					
General Fund Appropriation (Enter General Fund Lapse Below)	363,051	357,031	364,172	7,141	2.00%
State Support Special Funds					
Federal Funds _____ Other Special Funds (Specify) _____					
Less: Estimated Cash Available Next Fiscal Period					
TOTAL FUNDS (equals Total Expenditures above)	363,051	357,031	364,172	7,141	2.00%
GENERAL FUND LAPSE	19,067				
III: PERSONNEL DATA					
Number of Positions Authorized in Appropriation Bill					
a.) Perm Full					
b.) Perm Part					
c.) T-L Full					
d.) T-L Part					
Average Annual Vacancy Rate (Percentage)					
a.) Perm Full					
b.) Perm Part					
c.) T-L Full					
d.) T-L Part					

Approved by: Dr. John Pearce Submitted by: Dr. John Pearce Date: 7/26/2017 9:29 AM
 Official of Board or Commission
 Budget Officer: Don Zant / dzant@budgetplan.msstate.edu Phone Number: 6623252231 Title: Assoc Commissioner



REQUEST BY FUNDING SOURCE

Name of Agency : MS State Univ - Water Resources Research Institute

Specify Funding Sources As Shown Below	FY 2017 Actual Amount	% of Line Item	% of Total Budget	FY 2018 Estimated Amount	% of Line Item	% of Total Budget	FY 2019 Requested Amount	% of Line Item	% of Total Budget
1. General _____ State Support Special (Specify) _____									
2. Budget Contingency Fund									
3. Education Enhancement Fund									
4. Health Care Expendable Fund									
5. Tobacco Control Fund									
6. Capital Expense Fund									
7. Working Cash Stabilization Reserve Fund									
8. Federal _____ Other Special (Specify) _____									
9.									
10.									
11.									
12.									
Total Salaries									
1. General _____ State Support Special (Specify) _____									
2. Budget Contingency Fund									
3. Education Enhancement Fund									
4. Health Care Expendable Fund									
5. Tobacco Control Fund									
6. Capital Expense Fund									
7. Working Cash Stabilization Reserve Fund									
8. Federal _____ Other Special (Specify) _____									
9.									
10.									
11.									
12.									
Total Travel									
1. General _____ State Support Special (Specify) _____									
2. Budget Contingency Fund									
3. Education Enhancement Fund									
4. Health Care Expendable Fund									
5. Tobacco Control Fund									
6. Capital Expense Fund									
7. Working Cash Stabilization Reserve Fund									
8. Federal _____ Other Special (Specify) _____									
9.									
10.									
11.									
12.									
Total Contractual									
1. General _____ State Support Special (Specify) _____									
2. Budget Contingency Fund									
3. Education Enhancement Fund									
4. Health Care Expendable Fund									
5. Tobacco Control Fund									
6. Capital Expense Fund									
7. Working Cash Stabilization Reserve Fund									
8. Federal _____ Other Special (Specify) _____									
9.									
10.									
11.									
12.									
Total Commodities									

REQUEST BY FUNDING SOURCE

Name of Agency : MS State Univ - Water Resources Research Institute

Specify Funding Sources As Shown Below	FY 2017 Actual Amount	% of Line Item	% of Total Budget	FY 2018 Estimated Amount	% of Line Item	% of Total Budget	FY 2019 Requested Amount	% of Line Item	% of Total Budget
1. General _____ State Support Special (Specify) _____									
2. Budget Contingency Fund									
3. Education Enhancement Fund									
4. Health Care Expendable Fund									
5. Tobacco Control Fund									
6. Capital Expense Fund									
7. Working Cash Stabilization Reserve Fund									
8. Federal _____ Other Special (Specify) _____									
9.									
10.									
11.									
12.									
Total Capital Other Than Equipment									
1. General _____ State Support Special (Specify) _____									
2. Budget Contingency Fund									
3. Education Enhancement Fund									
4. Health Care Expendable Fund									
5. Tobacco Control Fund									
6. Capital Expense Fund									
7. Working Cash Stabilization Reserve Fund									
8. Federal _____ Other Special (Specify) _____									
9.									
10.									
11.									
12.									
Total Capital Equipment									
1. General _____ State Support Special (Specify) _____									
2. Budget Contingency Fund									
3. Education Enhancement Fund									
4. Health Care Expendable Fund									
5. Tobacco Control Fund									
6. Capital Expense Fund									
7. Working Cash Stabilization Reserve Fund									
8. Federal _____ Other Special (Specify) _____									
9.									
10.									
11.									
12.									
Total Vehicles									
1. General _____ State Support Special (Specify) _____									
2. Budget Contingency Fund									
3. Education Enhancement Fund									
4. Health Care Expendable Fund									
5. Tobacco Control Fund									
6. Capital Expense Fund									
7. Working Cash Stabilization Reserve Fund									
8. Federal _____ Other Special (Specify) _____									
9.									
10.									
11.									
12.									
Total Wireless Communication Devs.									

REQUEST BY FUNDING SOURCE

Name of Agency : MS State Univ - Water Resources Research Institute

Specify Funding Sources As Shown Below	FY 2017 Actual Amount	% of Line Item	% of Total Budget	FY 2018 Estimated Amount	% of Line Item	% of Total Budget	FY 2019 Requested Amount	% of Line Item	% of Total Budget
1. General _____ State Support Special (Specify) _____	363,051	100.00		357,031	100.00		364,172	100.00	
2. Budget Contingency Fund									
3. Education Enhancement Fund									
4. Health Care Expendable Fund									
5. Tobacco Control Fund									
6. Capital Expense Fund									
7. Working Cash Stabilization Reserve Fund									
8. Federal _____ Other Special (Specify) _____									
9.									
10.									
11.									
12.									
Total Subsidies	363,051		100.00%	357,031		100.00%	364,172		100.00%
1. General _____ State Support Special (Specify) _____	363,051	100.00		357,031	100.00		364,172	100.00	
2. Budget Contingency Fund									
3. Education Enhancement Fund									
4. Health Care Expendable Fund									
5. Tobacco Control Fund									
6. Capital Expense Fund									
7. Working Cash Stabilization Reserve Fund									
8. Federal _____ Other Special (Specify) _____									
9.									
10.									
11.									
12.									
TOTAL	363,051		100.00%	357,031		100.00%	364,172		100.00%

SPECIAL FUNDS DETAIL

MS State Univ - Water Resources Research Institute (445-00)

Name of Agency

S. STATE SUPPORT SPECIAL FUNDS		(1) Actual Revenues FY 2017	(2) Estimated Revenues FY 2018	(3) Requested Revenues FY 2019
Source (Fund Number)	Detailed Description of Source			
Budget Contingency Fund	BCF - Budget Contingency			
Education Enhancement Fund	EEF - Education Enhancement Fund			
Health Care Expendable Fund	HCEF - Health Care Expendable Fund			
Tobacco Control Fund	TCF - Tobacco Control Fund			
Capital Expense Fund	CEF - Capital Expense Fund			
Working Cash Stabilization Reserve Fund	WCSSF - Working Cash Stabilization Reserve Fund			
State Support Special Fund TOTAL				
STATE SUPPORT SPECIAL FUND LAPSE				

A. FEDERAL FUNDS *		Percentage Match Requirement	(1) Actual Revenues FY 2017	(2) Estimated Revenues FY 2018	(3) Requested Revenues FY 2019
Source (Fund Number)	Detailed Description of Source	FY 2018 FY 2019			
	Cash Balance-Unencumbered				
Federal Fund TOTAL					

B. OTHER SPECIAL FUNDS (NON-FED'L)		(1) Actual Revenues FY 2017	(2) Estimated Revenues FY 2018	(3) Requested Revenues FY 2019
Source (Fund Number)	Detailed Description of Source			
	Cash Balance-Unencumbered			
Other Special Fund TOTAL				

SECTIONS S + A + B TOTAL				
---------------------------------	--	--	--	--

C. TREASURY FUND/BANK ACCOUNTS *	Fund/Account Number	Name of Bank (If Applicable)	(1) Reconciled Balance as of 6/30/17	(2) Balance as of 6/30/18	(3) Balance as of 6/30/19
Name of Fund/Account					

* Any non-federal funds that have restricted uses must be identified and narrative of restrictions attached.

**NARRATIVE OF SPECIAL FUNDS DETAIL AND TREASURY
FUND/BANK ACCOUNTS**

MS State Univ - Water Resources Research Institute (445-00)

Name of Agency

CONTINUATION AND EXPANDED TOTAL REQUEST

MS State Univ - Water Resources Research Institute (445-00)

SUMMARY OF ALL PROGRAMS

Name of Agency

Program

	FY 2017 Actual				
	(1) General	(2) State Support Special	(3) Federal	(4) Other Special	(5) Total
Salaries,Wages & Fringe					
Travel					
Contractual Services					
Commodities					
Other Than Equipment					
Equipment					
Vehicles					
Wireless Communication Devices					
Subsidies, Loans & Grants	363,051				363,051
Total	363,051				363,051
No. of Positions (FTE)					

	FY 2018 Estimated				
	(6) General	(7) State Support Special	(8) Federal	(9) Other Special	(10) Total
Salaries,Wages & Fringe					
Travel					
Contractual Services					
Commodities					
Other Than Equipment					
Equipment					
Vehicles					
Wireless Communication Devices					
Subsidies, Loans & Grants	357,031				357,031
Total	357,031				357,031
No. of Positions (FTE)					

	FY 2019 Increase/Decrease for Continuation				
	(11) General	(12) State Support Special	(13) Federal	(14) Other Special	(15) Total
Salaries,Wages & Fringe					
Travel					
Contractual Services					
Commodities					
Other Than Equipment					
Equipment					
Vehicles					
Wireless Communication Devices					
Subsidies, Loans & Grants	7,141				7,141
Total	7,141				7,141
No. of Positions (FTE)					

Note: FY2019 Total Request = FY2018 Estimated + FY2019 Incr(Decr) for Continuation + FY2019 Expansion/Reduction of Existing Activities + FY2019 New Activities.

CONTINUATION AND EXPANDED TOTAL REQUEST

MS State Univ - Water Resources Research Institute (445-00)

SUMMARY OF ALL PROGRAMS

Name of Agency	Program				
	FY 2019 Expansion/Reduction of Existing Activities				
	(16) General	(17) State Support Special	(18) Federal	(19) Other Special	(20) Total
Salaries,Wages & Fringe					
Travel					
Contractual Services					
Commodities					
Other Than Equipment					
Equipment					
Vehicles					
Wireless Communication Devices					
Subsidies, Loans & Grants					
Total					
No. of Positions (FTE)					

	FY 2019 New Activities (*)				
	(21) General	(22) State Support Special	(23) Federal	(24) Other Special	(25) Total
Salaries,Wages & Fringe					
Travel					
Contractual Services					
Commodities					
Other Than Equipment					
Equipment					
Vehicles					
Wireless Communication Devices					
Subsidies, Loans & Grants					
Total					
No. of Positions (FTE)					

	FY 2019 Total Request				
	(26) General	(27) State Support Special	(28) Federal	(29) Other Special	(30) Total
Salaries,Wages & Fringe					
Travel					
Contractual Services					
Commodities					
Other Than Equipment					
Equipment					
Vehicles					
Wireless Communication Devices					
Subsidies, Loans & Grants	364,172				364,172
Total	364,172				364,172
No. of Positions (FTE)					

Note: FY2019 Total Request = FY2018 Estimated + FY2019 Incr(Decr) for Continuation + FY2019 Expansion/Reduction of Existing Activities + FY2019 New Activities.

**SUMMARY OF PROGRAMS
FORM MBR-1-03sum**

MS State Univ - Water Resources Research Institute (445-00)

Name of Agency

FUNDING REQUESTED FISCAL YEAR 2019

	PROGRAM	GENERAL	ST. SUPP. SPECIAL	FEDERAL	OTHER SPECIAL	TOTAL
1.	Research & Technology Transfer	364,172				364,172
	Summary of All Programs	364,172				364,172

CONTINUATION AND EXPANDED REQUEST

Program 1 of 1

MS State Univ - Water Resources Research Institute (445-00)

Research & Technology Transfer

Name of Agency

Program

	FY 2017 Actual				
	(1) General	(2) State Support Special	(3) Federal	(4) Other Special	(5) Total
Salaries,Wages & Fringe					
Travel					
Contractual Services					
Commodities					
Other Than Equipment					
Equipment					
Vehicles					
Wireless Communication Devices					
Subsidies, Loans & Grants	363,051				363,051
Total	363,051				363,051
No. of Positions (FTE)					

	FY 2018 Estimated				
	(6) General	(7) State Support Special	(8) Federal	(9) Other Special	(10) Total
Salaries,Wages & Fringe					
Travel					
Contractual Services					
Commodities					
Other Than Equipment					
Equipment					
Vehicles					
Wireless Communication Devices					
Subsidies, Loans & Grants	357,031				357,031
Total	357,031				357,031
No. of Positions (FTE)					

	FY 2019 Increase/Decrease for Continuation				
	(11) General	(12) State Support Special	(13) Federal	(14) Other Special	(15) Total
Salaries,Wages & Fringe					
Travel					
Contractual Services					
Commodities					
Other Than Equipment					
Equipment					
Vehicles					
Wireless Communication Devices					
Subsidies, Loans & Grants	7,141				7,141
Total	7,141				7,141
No. of Positions (FTE)					

Note: FY2019 Total Request = FY2018 Estimated + FY2019 Incr(Decr) for Continuation + FY2019 Expansion/Reduction of Existing Activities + FY2019 New Activities.

CONTINUATION AND EXPANDED REQUEST

MS State Univ - Water Resources Research Institute (445-00)

Research & Technology Transfer

Name of Agency

Program

	FY 2019 Expansion/Reduction of Existing Activities				
	(16) General	(17) State Support Special	(18) Federal	(19) Other Special	(20) Total
Salaries,Wages & Fringe					
Travel					
Contractual Services					
Commodities					
Other Than Equipment					
Equipment					
Vehicles					
Wireless Communication Devices					
Subsidies, Loans & Grants					
Total					
No. of Positions (FTE)					

	FY 2019 New Activities (*)				
	(21) General	(22) State Support Special	(23) Federal	(24) Other Special	(25) Total
Salaries,Wages & Fringe					
Travel					
Contractual Services					
Commodities					
Other Than Equipment					
Equipment					
Vehicles					
Wireless Communication Devices					
Subsidies, Loans & Grants					
Total					
No. of Positions (FTE)					

	FY 2019 Total Request				
	(26) General	(27) State Support Special	(28) Federal	(29) Other Special	(30) Total
Salaries,Wages & Fringe					
Travel					
Contractual Services					
Commodities					
Other Than Equipment					
Equipment					
Vehicles					
Wireless Communication Devices					
Subsidies, Loans & Grants	364,172				364,172
Total	364,172				364,172
No. of Positions (FTE)					

Note: FY2019 Total Request = FY2018 Estimated + FY2019 Incr(Decr) for Continuation + FY2019 Expansion/Reduction of Existing Activities + FY2019 New Activities.

PROGRAM DECISION UNITS

MS State Univ - Water Resources Research Institute

1 - Research & Technology Transfer

Name of Agency

Program Name

	A	B	C	D	E	F		
EXPENDITURES	FY 2018 Appropriated	Escalations By DFA	Non-Recurring Items	Restoration of Funds	Total Funding Change	FY 2019 Total Request		
SALARIES								
GENERAL								
ST. SUP. SPECIAL								
FEDERAL								
OTHER								
TRAVEL								
GENERAL								
ST. SUP.SPECIAL								
FEDERAL								
OTHER								
CONTRACTUAL								
GENERAL								
ST. SUP. SPECIAL								
FEDERAL								
OTHER								
COMMODITIES								
GENERAL								
ST. SUP. SPECIAL								
FEDERAL								
OTHER								
CAPTITAL-OTE								
GENERAL								
ST. SUP. SPECIAL								
FEDERAL								
OTHER								
EQUIPMENT								
GENERAL								
ST. SUP. SPECIAL								
FEDERAL								
OTHER								
VEHICLES								
GENERAL								
ST. SUP. SPECIAL								
FEDERAL								
OTHER								
WIRELESS DEV								
GENERAL								
ST. SUP. SPECIAL								
FEDERAL								
OTHER								
SUBSIDIES	357,031			7,141	7,141	364,172		
GENERAL	357,031			7,141	7,141	364,172		
ST. SUP. SPECIAL								
FEDERAL								
OTHER								
TOTAL	357,031			7,141	7,141	364,172		

FUNDING

GENERAL FUNDS	357,031			7,141	7,141	364,172		
ST. SUP. SPCL FUNDS								
FEDERAL FUNDS								
OTHER SP. FUNDS								
TOTAL	357,031			7,141	7,141	364,172		

POSITIONS

GENERAL FTE								
ST. SUP. SPCL. FTE								
FEDERAL FTE								
OTHER SP. FTE								
TOTAL								

PRIORITY LEVEL :

				1				
--	--	--	--	---	--	--	--	--

PROGRAM NARRATIVE

Program Data Collected in Accordance with the Mississippi Performance Budget and Strategic Planning Act of 1994
(To Accompany Form MBR-1-03)

MS State Univ - Water Resources Research Institute

1 - Research & Technology Transfer

Name of Agency

Program Name

I. Program Description:**I. Program Description:**

Mississippi Water Resources Research Institute. The Mississippi Water Resources Research Institute (MWRRI) was authorized by Mississippi's Governor Paul B. Johnson in 1964 and is one of 54 institutes in the United States that form a network of coordinated research programs to solve water problems of state, regional, or national significance. In 1983, the Mississippi Legislature formally designated MWRRI as a state research institute. Federal legislation specifies that each institute consult with leading water officials of the state in developing a coordinated research technology transfer and training program that applies academic expertise to water and related land-use problems. These activities are funded in large part through an annual grant from the U.S. Geological Survey. MWRRI's state authorization charges it with carrying out the responsibilities listed below:

1. Assist state agencies in developing and maintaining a state water management plan;
2. Consult with state and local agencies, water management districts, water user associations, the Mississippi legislature, and other potential users to identify and establish water research, planning, policy, and management priorities.
3. Negotiate and administer contracts with local, regional, state and federal agencies and other Mississippi universities to mitigate priority water and related problems;
4. Report to the appropriate state agencies each year on research projects' progress and findings;
5. Disseminate new information and facilitate transfer and application of new technologies as they are developed;
6. Be a liaison between Mississippi and funding agencies as an advocate for Mississippi water research, planning, policy, and management needs; and
7. Facilitate and stimulate planning and management that:
 - a. Deals with water policy issues facing the state of Mississippi;
 - b. Supports state water agencies' missions with research on encountered and expected problems;
 - c. Provides water planning and management organizations with tools to increase efficiency and effectiveness of water planning and management.

Center of Excellence for Watershed Management. On April 9, 2013, MSU through the MWRRI was designated by Region 4 of the U.S. Environmental Protection Agency (EPA Region 4) and the Mississippi Department of Environmental Quality (MDEQ) as a Center of Excellence for Watershed Management with the formal signing of a Memorandum of Understanding (MOU) by these parties. The MOU acknowledges that the MWRRI had demonstrated to the satisfaction of EPA and MDEQ that it has the capacity and capability to identify and address the needs of local watershed stakeholders and that it has support at the appropriate levels of MSU. It also specifies the Center of Excellence to serve as the point of contact and primary coordinating entity for colleges and universities in Mississippi. The primary purpose of the Center of Excellence is to utilize the diverse talent and expertise of colleges and universities by providing hands on practical products and services to help communities identify watershed-based problems and develop and implement locally-sustainable solutions. The MOU also guides the Center of Excellence to actively seek out watershed-based stakeholders that need assistance with project development and management, research and monitoring, education and outreach, engineering design, computer mapping, legal and policy review, and other water resource planning and implementation needs. Annual commitments of the MWRRI to maintain the designation are also identified in the MOU.

New Vision for Irrigated Agriculture in Mississippi. Mississippi, as a state blessed with abundant rainfall and groundwater, is uniquely positioned to capitalize on these water resources to dramatically enhance our economy and well-being of its citizens. Many other states with an intensive agricultural economy are experiencing major challenges in water availability due to a combination of drought, intensive competition with urban areas for limited water supplies, and unsustainable declines in aquifer levels. These limited water resources positions Mississippi well, if we have the will and vision to capitalize on these opportunities. During its 2016 session, Mississippi's legislature provided increased funding to MWRRI, as part of a four-year budgeting process, to take a leadership role in implementing a new vision for irrigated agriculture in Mississippi. The new vision focuses on the following areas:

1. Development of irrigation technologies and methods designed to maximize agricultural and land use productivity while creating sustainable systems of aquifer utilization in the Mississippi Delta. This will complement national funding efforts with USDA's Agricultural Research Service in Stoneville, MS.
2. Development of sustainable and economically efficient agricultural irrigation and industrial use systems in south and east Mississippi utilizing climatic (rain) water storage through surface water impoundment.
3. Maximize cultural, business and economic development opportunities created by the extensive national investments in the

PROGRAM NARRATIVE

Program Data Collected in Accordance with the Mississippi Performance Budget and Strategic Planning Act of 1994
(To Accompany Form MBR-1-03)

Tennessee-Tombigbee Waterway. This will complement national funding efforts in collaboration with Alabama.
4. Protection of all Mississippi surface and ground water resources from sediment and nutrient contamination. This will complement efforts from the federal multi-agency Nutrient Management Task Force.

Working across all units of MSU, as well as with key stakeholders statewide, MWRRI will invest in research on new, high-cash-value crops that require more intensive water resources, advanced irrigation technologies, new production practices that conserve water, development of best management practices that preserve and enhance water quality, and educational programs that effectively disseminate research findings to our stakeholders.

The four-year budget request submitted during the 2016 legislative session to implement the new vision for irrigated agriculture in Mississippi was (each year is above the FY15 base for WRRRI):

- Year 1: \$300,000 to hire nationally recognized water resource professional
During FY17 received additional \$141,587 and hired a full time Director after a nationwide search.
- Year 2: \$600,000 to initiate research and outreach programs in Objectives 1 and 2
- Year 3: \$800,000 to initiate research and outreach programs in Objectives 1-3
- Year 4: \$1,000,000 to initiate and sustain research and outreach programs in all objectives

II. Program Objective:

- 1. Serve public and private interests in the conservation, development, and use of water resources.
- 2. Provide training opportunities in higher education whereby skilled professionals become available to serve government and private sectors alike.
- 3. Assist planning and regulatory bodies at the local, state, regional, and federal levels.
- 4. Communicate research findings to potential users in a form that encourages quick comprehension and direct application to water related problems.

III. Current program activities as supported by the funding in Columns 6-15 (FY 2018 & FY 2019 Increase/Decrease for continuations) of MBR-1-03 and designated Budget Unit Decisions columns of MBR-1-03-A:

(D) Restoration of Funds:

Recover FY 2016 Appropriations

Elements of Quality Program Design

For the Evaluation of Requests to Fund New Programs or New Activity in an Existing Program
(To Accompany Form MBR-1-03A)

PROGRAM PERFORMANCE INDICATORS AND MEASURES

Program Data Collected in Accordance with the Mississippi Performance Budget and Strategic Planning Act of 1994

MS State Univ - Water Resources Research Institute (445-00)

1 - Research & Technology Transfer

Name of Agency

PROGRAM NAME

PROGRAM OUTPUTS: (This is the measure of the process necessary to carry on the goals and objectives of this program. This is the volume produced, i.e., how many people served, how many documents generated.)

	FY 2017 APPRO	FY 2017 ACTUAL	FY 2018 ESTIMATED	FY 2019 PROJECTED
1 Annual list of MWRRI's water resources research priorities	1.00	1.00	1.00	1.00
2 Annually prepare and distribute RFP for 104b grant program	1.00	1.00	1.00	1.00
3 Number of research projects funded using 104b resources	2.00	2.00	2.00	2.00
4 Number of faculty involved in 104b-funded research project	5.00	5.00	3.00	3.00
5 Number of students involved in 104b-funded research projects	10.00	10.00	4.00	4.00
6 Number of collaborative research concepts, abstracts or proposals developed or co-facilitated by MWRRI that were submitted for external funding	3.00	3.00	3.00	3.00
7 Number of collaborative research concepts, abstracts or proposals developed or co-facilitated by MWRRI that received external funding	2.00	2.00	1.00	1.00
8 Number of faculty involved in externally funded research projects developed or co-facilitated by MWRRI	2.00	2.00	4.00	4.00
9 Number of students involved in externally funded research projects developed or co-facilitated by MWRRI	4.00	4.00	4.00	4.00
10 Documentation in annual report submitted to MDEQ and EPA of status of MOU annual work plan commitments	1.00	1.00	1.00	1.00
11 Number of consultations with agencies/clients	1,050.00	1,050.00	1,000.00	1,000.00
12 Number of watershed-based project concepts, abstracts or proposals developed or co-facilitated by MWRRI and submitted for external funding	1.00	1.00	1.00	1.00
13 Number of watershed-based plans developed or co-facilitated by MWRRI	1.00	1.00	1.00	1.00
14 Number of individual university units involved with watershed-based projects	8.00	8.00	4.00	4.00
15 Number of faculty involved in watershed-based projects	8.00	8.00	6.00	6.00
16 Number of students involved in watershed-based projects	8.00	8.00	6.00	6.00
17 Number of resource agencies and stakeholder organizations involved with watershed-based projects	5.00	5.00	4.00	4.00
18 Information Transfer - Number of presentations to peer-recognized forums, published articles and/or reports	8.00	8.00	12.00	12.00
19 Number of annual conference attendees	130.00	130.00	130.00	130.00
20 Number of conference sponsorships	2.00	2.00	2.00	2.00

PROGRAM EFFICIENCIES: (This is the measure of the cost, unit cost or productivity associated with a given outcome or output. This measure indicates linkage between services and funding, i.e., cost per investigation, cost per student or number of days to complete investigation.)

	FY 2017 APPRO	FY 2017 ACTUAL	FY 2018 ESTIMATED	FY 2019 PROJECTED
1 Amount of federal funding received for potential 104b-funded research	92,335.00	92,335.00	90,000.00	90,000.00
2 Amount of state funding received for potential 104b-funded research	446,000.00	446,000.00	240,000.00	240,000.00
3 Amount of federal and state funding awarded by MWRRI or used administratively to support the 104b research program	538,335.00	538,335.00	330,000.00	330,000.00
4 Amount of funding from other sources or related research projects that was leveraged or used as match with 104b research funding	57,000.00	57,000.00	57,000.00	57,000.00
5 Amount of external research funding awarded to MWRRI and/or co-facilitators	136,500.00	136,500.00	90,000.00	90,000.00

PROGRAM PERFORMANCE INDICATORS AND MEASURES

Program Data Collected in Accordance with the Mississippi Performance Budget and Strategic Planning Act of 1994

MS State Univ - Water Resources Research Institute (445-00)	1 - Research & Technology Transfer			
Name of Agency	PROGRAM NAME			
6 Amount of watershed-based project funding awarded/committed to MWRRRI or co-facilitators	264,726.00	264,726.00	75,000.00	75,000.00
7 Amount of watershed-based project funding leveraged through partners (cumulative)	394,400.00	394,400.00	150,000.00	150,000.00
8 Ratio of watershed-based project funding awarded/committed to leveraged funding through partners	67.00	67.00	0.75	0.75
9 Cost of publications, presentations, and/or demonstrations	5,000.00	5,000.00	5,000.00	5,000.00
10 Cost of annual conference	30,000.00	30,000.00	30,000.00	30,000.00
11 Amount of conference sponsorships	1,000.00	1,000.00	1,000.00	1,000.00

PROGRAM OUTCOMES: (This is the measure of the quality or effectiveness of the services provided by this program. This measure provides an assessment of the actual impact or public benefit of your agency's actions. This is the results produced, i.e., increased customer satisfaction by x% within a 12-month period, reduce the number of traffic fatalities due to drunk drivers within a 12-month period.

	FY 2017 APPRO	FY 2017 ACTUAL	FY 2018 ESTIMATED	FY 2019 PROJECTED
1 Annual list of MWRRRI's water resources research priorities approved by Advisory Board	1.00	1.00	1.00	1.00
2 Number of research proposals received for potential 104b funding	11.00	11.00	6.00	6.00
3 Percentage of 104b-funded research project applications by planners, managers, regulators, water users and stakeholders	0.00	0.00	100.00	100.00
4 Percentage of collaborative research concepts, abstracts or proposals developed or co-facilitated by MWRRRI that received external funding	66.70	66.70	33.30	33.30
5 Percentage of externally funded research project applications by planners, managers, regulators, water users and stakeholders	100.00	100.00	100.00	100.00
6 Percentage of successfully completed MOU annual work plan commitments	100.00	100.00	100.00	100.00
7 Percentage of watershed-based projects receiving funding awards by MWRRRI or co-facilitators	100.00	100.00	100.00	100.00
8 Percentage of funded watershed-based projects implemented demonstrating improvements/protection of water quality/quantity	0.00	0.00	100.00	100.00
9 Percentage of funded watershed-based projects implemented demonstrating improvements/protection of ecosystem health	0.00	0.00	100.00	100.00
10 Percentage of funded watershed-based projects considered successful by pre-defined social indicators	0.00	0.00	100.00	100.00
11 Percentage of quantifiable and documentable changes in Stakeholder perceptions, beliefs and behaviors concerning specific water resources issues through survey efforts	0.00	0.00	20.00	20.00
12 Number of references in other research articles and reports	2.00	2.00	2.00	2.00
13 Percentage of conference favorable comments from evaluation form	95.00	95.00	95.00	95.00

PROGRAM 3% GENERAL FUND REDUCTION AND NARRATIVE EXPLANATION

MS State Univ - Water Resources Research Institute (445-00)

	Fiscal Year 2018 Funding			FY 2018 GF PERCENT REDUCED
	Total Funds	Reduced Amount	Reduced Funding Amount	

Program Name: (1) Research & Technology Transfer				
General	357,031	(10,710)	346,321	(3.00%)
State Support Special				
Federal				
Other Special				
TOTAL	357,031	(10,710)	346,321	

Narrative Explanation:

This reduction directly impacts our available match for federal grants.

Program Name: (99) Summary of All Programs				
General	357,031	(10,710)	346,321	(3.00%)
State Support Special				
Federal				
Other Special				
TOTAL	357,031	(10,710)	346,321	

BOARD OF TRUSTEES OF STATE INSTITUTIONS OF HIGHER LEARNING MEMBERS

MS State Univ - Water Resources Research Institute (445-00)

Name of Agency

A. Explain Rate and manner in which board members are reimbursed:

Board members are reimbursed through the Institution of Higher Learning System Administration budget with a per diem of \$40 plus expenses.

B. Estimated number of meetings FY 2018:

12 (Twelve)

C. Names of Members	City, Town, Residence	Appointed By	Date of Appointment	Length of Term
1. Mr. Alan W. Perry	Jackson, MS	Barbour	5- 8- 2008	10 years
2. Ms. Christine L. Pickering	Biloxi, MS	Barbour	5- 8- 2008	10 years
3. Mr. C.D.Smith Jr.	Meridian, MS	Barbour	5- 8- 2008	10 years
4. Dr. Douglas W. Rouse	Hattiesburg, MS	Barbour	5- 8- 2008	10 years
5. Justice Ann H. Lamar	Senatobia, MS	Bryant	2- 8- 2017	4 years
6. Dr. Bradford J. Dye, III	Oxford, MS	Bryant	5- 8- 2012	9 years
7. Mr. Shane Hooper	Tupelo, MS	Bryant	5- 8- 2012	9 years
8. Mr. Hal Parker	Bolton, MS	Bryant	5- 8- 2012	9 years
9. Mr. Tom Duff	Hattiesburg, MS	Bryant	5- 8- 2015	9 years
10. Dr. Alfred E. McNair, Jr.	Gautier, MS	Bryant	5- 8- 2015	9 years
11. Mr. Chip Morgan	Leland, MS	Bryant	5- 8- 2015	9 years
12. Dr. J. Walt Starr	Columbus, MS	Bryant	5- 8- 2015	9 years

Identify Statutory Authority (Code Section or Executive Order Number)*

Constitutional Amendment 213A of the Constitution of the State of Mississippi.

*If Executive Order, please attach copy.

**SCHEDULE B
CONTRACTUAL SERVICES**

MS State Univ - Water Resources Research Institute (445-00)
Name of Agency

MINOR OBJECT OF EXPENDITURE	(1) Actual Expenses FY Ending June 30, 2017	(2) Estimated Expenses FY Ending June 30, 2018	(3) Requested for FY Ending June 30, 2019
-----------------------------	--	---	--

Grand Total <i>(Enter on Line 1-B of Form MBR-1)</i>			
--	--	--	--

Funding Summary: General Funds			
State Support Special Funds			
Federal Funds			
Other Special Funds			
Total Funds			

**SCHEDULE C
COMMODITIES**

MS State Univ - Water Resources Research Institute (445-00)

Name of Agency

MINOR OBJECT OF EXPENDITURE	(1) Actual Expenses FY Ending June 30, 2017	(2) Estimated Expenses FY Ending June 30, 2018	(3) Requested for FY Ending June 30, 2019
-----------------------------	--	---	--

Grand Total <i>(Enter on Line 1-C of Form MBR-1)</i>			
--	--	--	--

Funding Summary:			
General Funds			
State Support Special Funds			
Federal Funds			
Other Special Funds			
Total Funds			

**SCHEDULE D-1
CAPITAL OUTLAY
OTHER THAN EQUIPMENT**

MS State Univ - Water Resources Research Institute (445-00)
Name of Agency _____

MINOR OBJECT OF EXPENDITURE	(1) Actual Expenses FY Ending June 30, 2017	(2) Estimated Expenses FY Ending June 30, 2018	(3) Requested for FY Ending June 30, 2019
-----------------------------	--	---	--

Grand Total <i>(Enter on Line 1-D-1 of Form MBR-1)</i>			
--	--	--	--

Funding Summary:			
General Funds			
State Support Special Funds			
Federal Funds			
Other Special Funds			
Total Funds			

**SCHEDULE D-2
CAPITAL OUTLAY EQUIPMENT**

MS State Univ - Water Resources Research Institute (445-00)
Name of Agency

EQUIPMENT BY ITEM	Act. FY Ending June 30, 2017		Est. FY Ending June 30, 2018		Req. FY Ending June 30, 2019	
	No. of Units	Total Cost	No. of Units	Total Cost	No. of Units	Total Cost

Grand Total <i>(Enter on Line 1-D-2 of Form MBR-1)</i>						
--	--	--	--	--	--	--

Funding Summary:						
General Funds						
State Support Special Funds						
Federal Funds						
Other Special Funds						
Total Funds						

**SCHEDULE D-3
PASSENGER/WORK VEHICLES**

MS State Univ - Water Resources Research Institute (445-00)

Name of Agency

MINOR OBJECT OF EXPENDITURE	Vehicle Inventory June 30, 2017	Act. FY Ending June 30, 2017		Est. FY Ending June 30, 2018		Req. FY Ending June 30, 2019	
		No. of Units	Total Cost	No. of Units	Total Cost	No. of Units	Total Cost

GRAND TOTAL <i>(Enter on Line 1-D-3 of Form MBR-1)</i>							
--	--	--	--	--	--	--	--

Funding Summary:			
General Funds			
State Support Special Funds			
Federal Funds			
Other Special Funds			
Total Funds			

**SCHEDULE D-4
WIRELESS COMMUNICATION DEVICES**

MS State Univ - Water Resources Research Institute (445-00)
Name of Agency _____

MINOR OBJECT OF EXPENDITURE	Device Inventory June 30, 2017	Act. FY Ending June 30, 2017		Est. FY Ending June 30, 2018		Req. FY Ending June 30, 2019	
		No. of Devices	Actual Cost	No. of Devices	Estimated Cost	No. of Devices	Requested Cost

Grand Total <i>(Enter on Line 1-D-4 of Form MBR-1)</i>							
--	--	--	--	--	--	--	--

Funding Summary:							
General Funds							
State Support Special Funds							
Federal Funds							
Other Special Funds							
Total Funds							

**SCHEDULE E
SUBSIDIES, LOANS & GRANTS**

MS State Univ - Water Resources Research Institute (445-00)

Name of Agency

MINOR OBJECT OF EXPENDITURE	(1) Actual Expenses FY Ending June 30, 2017	(2) Estimated Expenses FY Ending June 30, 2018	(3) Requested for FY Ending June 30, 2019
E. Other (67000xxx-67019xxx, 67021xxx-67199xxx, 67998xxx, 68500xxx-68860xxx, 70045xxx-70080xxx, 80000xxx-80500xxx)			
Cost share on joint university/federal projects	363,051	357,031	364,172
Total	363,051	357,031	364,172
Grand Total			
<i>(Enter on Line 1-E of Form MBR-1)</i>	363,051	357,031	364,172
Funding Summary:			
General Funds	363,051	357,031	364,172
State Support Special Funds			
Federal Funds			
Other Special Funds			
Total Funds	363,051	357,031	364,172

NARRATIVE
2019 BUDGET REQUEST

MS State Univ - Water Resources Research Institute (445-00)

Name of Agency

I. Program Description:

Mississippi Water Resources Research Institute. The Mississippi Water Resources Research Institute (MWRRI) was authorized by Mississippi's Governor Paul B. Johnson in 1964 and is one of 54 institutes in the United States that form a network of coordinated research programs to solve water problems of state, regional, or national significance. In 1983, the Mississippi Legislature formally designated MWRRI as a state research institute. Federal legislation specifies that each institute consult with leading water officials of the state in developing a coordinated research technology transfer and training program that applies academic expertise to water and related land-use problems. These activities are funded in large part through an annual grant from the U.S. Geological Survey. MWRRI's state authorization charges it with carrying out the responsibilities listed below:

1. Assist state agencies in developing and maintaining a state water management plan;
2. Consult with state and local agencies, water management districts, water user associations, the Mississippi legislature, and other potential users to identify and establish water research, planning, policy, and management priorities.
3. Negotiate and administer contracts with local, regional, state and federal agencies and other Mississippi universities to mitigate priority water and related problems;
4. Report to the appropriate state agencies each year on research projects' progress and findings;
5. Disseminate new information and facilitate transfer and application of new technologies as they are developed;
6. Be a liaison between Mississippi and funding agencies as an advocate for Mississippi water research, planning, policy, and management needs; and
7. Facilitate and stimulate planning and management that:
 - a. Deals with water policy issues facing the state of Mississippi;
 - b. Supports state water agencies' missions with research on encountered and expected problems;
 - c. Provides water planning and management organizations with tools to increase efficiency and effectiveness of water planning and management.

Center of Excellence for Watershed Management. On April 9, 2013, MSU through the MWRRI was designated by Region 4 of the U.S. Environmental Protection Agency (EPA Region 4) and the Mississippi Department of Environmental Quality (MDEQ) as a Center of Excellence for Watershed Management with the formal signing of a Memorandum of Understanding (MOU) by these parties. The MOU acknowledges that the MWRRI had demonstrated to the satisfaction of EPA and MDEQ that it has the capacity and capability to identify and address the needs of local watershed stakeholders and that it has support at the appropriate levels of MSU. It also specifies the Center of Excellence to serve as the point of contact and primary coordinating entity for colleges and universities in Mississippi. The primary purpose of the Center of Excellence is to utilize the diverse talent and expertise of colleges and universities by providing hands on practical products and services to help communities identify watershed-based problems and develop and implement locally-sustainable solutions. The MOU also guides the Center of Excellence to actively seek out watershed-based stakeholders that need assistance with project development and management, research and monitoring, education and outreach, engineering design, computer mapping, legal and policy review, and other water resource planning and implementation needs. Annual commitments of the MWRRI to maintain the designation are also identified in the MOU.

New Vision for Irrigated Agriculture in Mississippi. Mississippi, as a state blessed with abundant rainfall and groundwater, is uniquely positioned to capitalize on these water resources to dramatically enhance our economy and well-being of its citizens. Many other states with an intensive agricultural economy are experiencing major challenges in water availability due to a combination of drought, intensive competition with urban areas for limited water supplies, and unsustainable declines in aquifer levels. These limited water resources positions Mississippi well, if we have the will and vision to capitalize on these opportunities. During its 2016 session, Mississippi's legislature provided increased funding to MWRRI, as part of a four-year budgeting process, to take a leadership role in implementing a new vision for irrigated agriculture in Mississippi. The new vision focuses on the following areas:

1. Development of irrigation technologies and methods designed to maximize agricultural and land use productivity while creating sustainable systems of aquifer utilization in the Mississippi Delta. This will complement national funding efforts with USDA's Agricultural Research Service in Stoneville, MS.
2. Development of sustainable and economically efficient agricultural irrigation and industrial use systems in south and east Mississippi utilizing climatic (rain) water storage through surface water impoundment.
3. Maximize cultural, business and economic development opportunities created by the extensive national investments in the Tennessee-Tombigbee Waterway. This will complement national funding efforts in collaboration with Alabama.
4. Protection of all Mississippi surface and ground water resources from sediment and nutrient contamination. This will complement efforts from the federal multi-agency Nutrient Management Task Force.

NARRATIVE
2019 BUDGET REQUEST

MS State Univ - Water Resources Research Institute (445-00)

Name of Agency

Working across all units of MSU, as well as with key stakeholders statewide, MWRRRI will invest in research on new, high-cash-value crops that require more intensive water resources, advanced irrigation technologies, new production practices that conserve water, development of best management practices that preserve and enhance water quality, and educational programs that effectively disseminate research findings to our stakeholders.

The four-year budget request submitted during the 2016 legislative session to implement the new vision for irrigated agriculture in Mississippi was (each year is above the FY 15 base for MWRRRI):

Year 1: \$300,000 to hire nationally recognized water resource professional

During FY17 received additional \$141,587 and hired a full time Director after a nationwide search.

Year 2: \$600,000 to initiate research and outreach programs in Objectives 1 and 2

Year 3: \$800,000 to initiate research and outreach programs in Objectives 1-3

Year 4: \$1,000,000 to initiate and sustain research and outreach programs in all objectives

II. Program Objectives:

1. Serve public and private interests in the conservation, development, and use of water resources.
2. Provide training opportunities in higher education whereby skilled professionals become available to serve government and private sectors alike.
3. Assist planning and regulatory bodies at the local, state, regional, and federal levels.
4. Communicate research findings to potential users in a form that encourages quick comprehension and direct application to water related problems.

III. Current program activities as supported by the funding in Columns 6-15 (FY18 Estimated & FY19 Increase/Decrease for continuations) of MBR-1-03 and designated Budget Unit Decisions columns of MBR-1-03-A:

1. The recovery of FY 16 appropriations will be utilized for:
 - a. MWRRRI administrates the identification, development, facilitation, and support of statewide water research priorities and projects.
 - b. USGS funding requires a 1:2 cost share on 104b research and 1:1 cost share on 104g research. To support the needed research, assistance from MWRRRI is used for obtaining the match. This may include expense for the PI salary, fringe benefits, student salary, fringe benefits, tuition, travel, research materials, and equipment. Student training is vitally important for solving future water research needs so travel funds are requested for giving research presentations to stakeholders and potential future employers, as well as information transfer materials.
 - c. Other external sponsor funding requiring cost share may include PI salary, fringe benefits, travel to meetings and conferences, and publications.
 - d. Continued interaction with stakeholders in Mississippi and state, regional and federal agencies further enhances development and implementation of needed water research project. This includes participation and support from other Mississippi Institutions of Higher Learning who can collaborate, cooperate, serve as co-principle investigators, and/or provide match support.
 - e. Furthering partnerships within the southeastern region will enhance proposal submissions for larger funding allotments as well as directing research for common water bodies and issues.

**OUT-OF-STATE TRAVEL
FISCAL YEAR 2019**

MS State Univ - Water Resources Research Institute (445-00)

Name of Agency

Note: All expenditures recorded on this form must be totaled and said total must agree with the out-of-state travel amount indicated for FY 2017 on Form Mbr-1, line 1.A.2.b.

Employee's Name	Destination	Purpose	Travel Cost	Funding Source
------------------------	--------------------	----------------	--------------------	-----------------------

Total Out of State Cost

FEES, PROFESSIONAL AND OTHER SERVICES

MS State Univ - Water Resources Research Institute (445-00)

Name of Agency _____

TYPE OF FEE AND NAME OF VENDOR	Retired w/ PERS	(1) Actual Expenses FY Ending June 30, 2017	(2) Estimated Expenses FY Ending June 30, 2018	(3) Requested Expenses FY Ending June 30, 2019	Fund Source
--------------------------------	-----------------------	--	---	---	-------------

GRAND TOTAL

VEHICLE PURCHASE DETAILS

MS State Univ - Water Resources Research Institute (445-00)

Name of Agency

Year	Model	Person(s) Assigned To	Vehicle Purpose/Use	Replacement Or New?	FY2019 Req. Cost
-------------	--------------	------------------------------	----------------------------	--------------------------------	-----------------------------

TOTAL VEHICLE REQUEST

**VEHICLE INVENTORY
AS OF JUNE 30, 2017**

MS State Univ - Water Resources Research Institute (445-00)

Name of Agency

Vehicle Type	Vehicle Description	Model Year	Model	Person(s) Assigned To	Purpose/Use	Tag Number	Mileage on 6-30-2017	Average Miles per Year	Replacement Proposed	
									FY2018	FY2019

**VEHICLE POOL MEMBER LIST
2019 BUDGET REQUEST**

MS State Univ - Water Resources Research Institute (445-00)

Name of Agency

**PRIORITY OF DECISION UNITS
FISCAL YEAR 2019**

MS State Univ - Water Resources Research Institute (445-00)

Name of Agency

Program	Decision Unit	Object	Amount
Priority # 1			
	Program # 1: Research & Technology Transfer		
	Restoration of Funds		
		Subsidies	7,141
		Totals	<u>7,141</u>
		General Funds	7,141

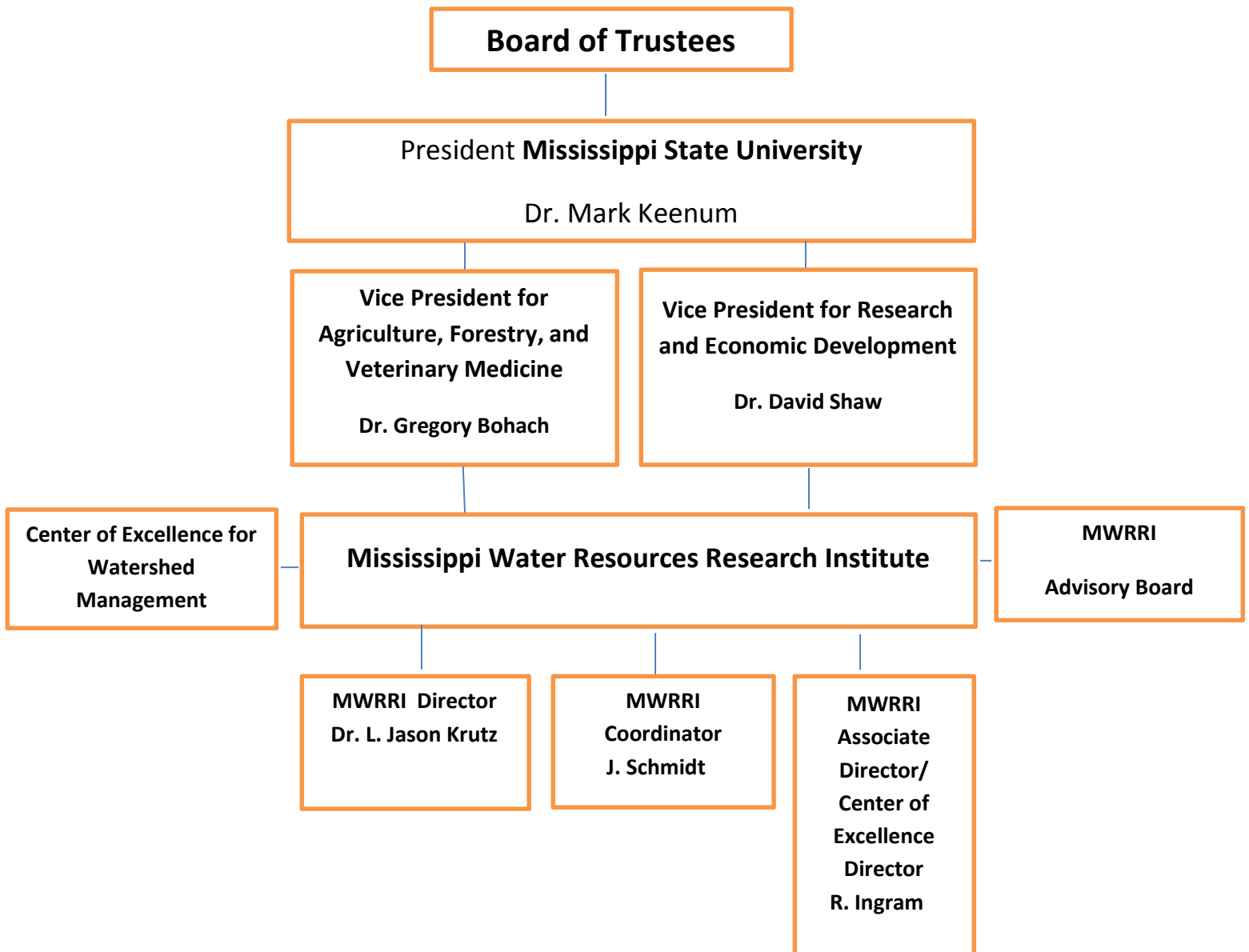
Summary of 3% General Fund Program Reduction to FY 2018 Appropriated Funding by Major Object

MS State Univ - Water Resources Research Institute (445-00)

Name of Agency

Major Object	FY2018 General Fund Reduction	EFFECT ON FY2018 STATE SUPPORT SPECIAL FUNDS	EFFECT ON FY2018 FEDERAL FUNDS	EFFECT ON FY2018 OTHER SPECIAL FUNDS	TOTAL 3% REDUCTIONS
SALARIES, WAGES, FRINGE					
TRAVEL					
CONTRACTUAL					
COMMODITIES					
OTHER THAN EQUIPMENT					
EQUIPMENT					
VEHICLES					
WIRELESS COMM. DEVS.					
SUBSIDIES, LOANS, ETC	(10,710)				(10,710)
TOTALS	(10,710)				(10,710)

Organizational Chart for the Mississippi Water Resources Research Institute



Agency Revenue Source Report - FY2017 Data

As Required by HB 831, 2015 Legislative Session

And SB 2387, 2016 Legislative Session

Agency Name MS State University - Water Resources Research Institute

Budget Year FY2017

State Support Sources Amount Received
 General Funds 363,051

State Support Special Funds Amount Received
 Education Enhancement Funds
 Health Care Expendable Funds
 Tobacco Control Funds
 Capital Expense Funds
 Budget Contingency Funds
 Working Cash Stabilization Reserve Funds

Special Funds Amount Received
 Sample Special Fund #1
 Sample Special Fund #2

Add Rows for Additional Special Funds

List all Federal Funds at its most specific level, such as an office or division, not the federal department.

Federal Funds Amount Received Action or results promised in order to receive funds
 Sample Federal Fund #1 Fund Summaries should be available October 1, 2017
 Sample Federal Fund #2
 Description of any Maintenance of Effort agreements entered into with any federal agency or subdivision thereof

Add Rows for Additional Special Funds

Revenue from Tax, Fine or Fee Assessed
 Sample Tax, Fine, Fee #1 Amount Assessed N/A
Copy Entire Section to Add New Item Amount Collected Fund Summaries should be available October 1, 2017
Authority to Collect
Method of Determining Assessment N/A
Method of Collection

Amt. & Purpose for which Expended Purpose
Amount Fund Summaries should be available October 1, 2017

Amount Transferred to General Fund
Authority for Transfer to General Fund
Amount Transferred to Another Entity
Authority for Transfer to Other Entity
Name of Other Entity
Fiscal Year-Ending Balance