

MS State Univ - Water Resources Research Institute

Mississippi State University, MS 39762

Dr. Mark E. Keenum

AGENCY

ADDRESS

CHIEF EXECUTIVE OFFICER

	Actual Expenses June 30,2021	Estimated Expenses June 30,2022	Requested For June 30,2023	Requested Over/(Under) Estimated	
				AMOUNT	PERCENT
I. A. PERSONAL SERVICES					
1. Salaries, Wages & Fringe Benefits (Base)					
a. Additional Compensation					
b. Proposed Vacancy Rate (Dollar Amount)					
c. Per Diem					
Total Salaries, Wages & Fringe Benefits					
2. Travel					
a. Travel & Subsistence (In-State)					
b. Travel & Subsistence (Out-Of-State)					
c. Travel & Subsistence (Out-Of-Country)					
Total Travel					
B. CONTRACTUAL SERVICE S (Schedule B)					
a. Tuition, Rewards & Awards					
b. Communications, Transportation & Utilities					
c. Public Information					
d. Rents					
e. Repairs & Service					
f. Fees, Professional & Other Services					
g. Other Contractual Services					
h. Data Processing					
i. Other					
Total Contractual Services					
C. COMMODITIES (Schedule C)					
a. Maintenance & Construction Materials & Supplies					
b. Printing & Office Supplies & Materials					
c. Equipment, Repair Parts, Supplies & Accessories					
d. Professional & Scientific Supplies & Materials					
e. Other Supplies & Materials					
Total Commodities					
D. CAPITAL OUTLAY					
1. Total Other Than Equipment (Schedule D-1)					
2. Equipment (Schedule D-2)					
b. Road Machinery, Farm & Other Working Equipment					
c. Office Machines, Furniture, Fixtures & Equipment					
d. IS Equipment (Data Processing & Telecommunications)					
e. Equipment - Lease Purchase					
f. Other Equipment					
Total Equipment (Schedule D-2)					
3. Vehicles (Schedule D-3)					
4. Wireless Comm. Devices (Schedule D-4)					
E. SUBSIDIES, LOANS & GRANTS (Schedule E)	351,676	351,676	368,170	16,494	4.69%
TOTAL EXPENDITURES	351,676	351,676	368,170	16,494	4.69%
II. BUDGET TO BE FUNDED AS FOLLOWS:					
Cash Balance-Unencumbered					
General Fund Appropriation (Enter General Fund Lapse Below)	351,676	351,676	368,170	16,494	4.69%
State Support Special Funds					
Federal Funds					
Other Special Funds (Specify)					
Less: Estimated Cash Available Next Fiscal Period					
TOTAL FUNDS (equals Total Expenditures above)	351,676	351,676	368,170	16,494	4.69%
GENERAL FUND LAPSE					
III: PERSONNEL DATA					
Number of Positions Authorized in Appropriation Bill					
a.) Perm Full					
b.) Perm Part					
c.) T-L Full					
d.) T-L Part					
Average Annual Vacancy Rate (Percentage)					
a.) Perm Full					
b.) Perm Part					
c.) T-L Full					
d.) T-L Part					

Approved by: Don Zant

Official of Board or Commission

Submitted by:

Lynn Wyman

Date :

7/19/2021 2:17 PM

Budget Officer:

Don Zant / dzant@budgetplan.msstate.edu

Phone Number:

662-325-2231

Title :

Business Manager II

Name of Agency : MS State Univ - Water Resources Research Institute

Specify Funding Sources As Shown Below	FY 2021 Actual Amount	% of Line Item	% of Total Budget	FY 2022 Estimated Amount	% of Line Item	% of Total Budget	FY 2023 Requested Amount	% of Line Item	% of Total Budget
1. General _____ State Support Special (Specify) _____									
2. Budget Contingency Fund									
3. Education Enhancement Fund									
4. Health Care Expendable Fund									
5. Tobacco Control Fund									
6. Capital Expense Fund									
7. Working Cash Stabilization Reserve Fund									
8. BP Settlement Fund									
9. Gulf Coast Restoration Fund									
10. Back To Business Mississippi Grant Fund									
11. MS COVID-19 Relief Payment Fund									
12. DFA CARES Act COVID-19 Fund									
13. MS Tourism Recovery Fund									
14. MS Nonprofit Museums Recovery Fund									
15. Equity in Distance Learning Fund									
16. Postsecondary Education COVID-19 Relief Grant Fund									
17. Independent Schools' COVID-19 Assistance Grant Fund									
18. MS Pandemic Response Broadband Availability Grant Program Fund									
19. MS Emergency Management Agency COVID-19 Fund									
20. MS Electric Cooperatives Broadband COVID-19 Grant Program Fund									
21. COVID-19 Broadband Provider Grant Program Fund									
22. Rental Assistance Grant Program Fund									
23. ICU Infrastructure Fund									
24. Poultry Farmer Stabilization Grant Program Fund									
25. Mississippi Supplemental CFAP Grant Program Fund									
26. Sweet Potato Farm Sustainment Grant Program Fund									
27. Coronavirus Local Fiscal Recovery Fund									
28. Coronavirus State Fiscal Recovery Fund									
29. Federal _____ Other Special (Specify) _____									
30.									
31.									
32.									
33.									
Total Salaries									

Name of Agency : MS State Univ - Water Resources Research Institute

Specify Funding Sources As Shown Below	FY 2021 Actual Amount	% of Line Item	% of Total Budget	FY 2022 Estimated Amount	% of Line Item	% of Total Budget	FY 2023 Requested Amount	% of Line Item	% of Total Budget
1. General _____ State Support Special (Specify) _____									
2. Budget Contingency Fund									
3. Education Enhancement Fund									
4. Health Care Expendable Fund									
5. Tobacco Control Fund									
6. Capital Expense Fund									
7. Working Cash Stabilization Reserve Fund									
8. BP Settlement Fund									
9. Gulf Coast Restoration Fund									
10. Back To Business Mississippi Grant Fund									
11. MS COVID-19 Relief Payment Fund									
12. DFA CARES Act COVID-19 Fund									
13. MS Tourism Recovery Fund									
14. MS Nonprofit Museums Recovery Fund									
15. Equity in Distance Learning Fund									
16. Postsecondary Education COVID-19 Relief Grant Fund									
17. Independent Schools' COVID-19 Assistance Grant Fund									
18. MS Pandemic Response Broadband Availability Grant Program Fund									
19. MS Emergency Management Agency COVID-19 Fund									
20. MS Electric Cooperatives Broadband COVID-19 Grant Program Fund									
21. COVID-19 Broadband Provider Grant Program Fund									
22. Rental Assistance Grant Program Fund									
23. ICU Infrastructure Fund									
24. Poultry Farmer Stabilization Grant Program Fund									
25. Mississippi Supplemental CFAP Grant Program Fund									
26. Sweet Potato Farm Sustainment Grant Program Fund									
27. Coronavirus Local Fiscal Recovery Fund									
28. Coronavirus State Fiscal Recovery Fund									
29. Federal _____ Other Special (Specify) _____									
30.									
31.									
32.									
33.									
Total Travel									

Name of Agency : MS State Univ - Water Resources Research Institute

Specify Funding Sources As Shown Below	FY 2021 Actual Amount	% of Line Item	% of Total Budget	FY 2022 Estimated Amount	% of Line Item	% of Total Budget	FY 2023 Requested Amount	% of Line Item	% of Total Budget
1. General _____ State Support Special (Specify) _____									
2. Budget Contingency Fund									
3. Education Enhancement Fund									
4. Health Care Expendable Fund									
5. Tobacco Control Fund									
6. Capital Expense Fund									
7. Working Cash Stabilization Reserve Fund									
8. BP Settlement Fund									
9. Gulf Coast Restoration Fund									
10. Back To Business Mississippi Grant Fund									
11. MS COVID-19 Relief Payment Fund									
12. DFA CARES Act COVID-19 Fund									
13. MS Tourism Recovery Fund									
14. MS Nonprofit Museums Recovery Fund									
15. Equity in Distance Learning Fund									
16. Postsecondary Education COVID-19 Relief Grant Fund									
17. Independent Schools' COVID-19 Assistance Grant Fund									
18. MS Pandemic Response Broadband Availability Grant Program Fund									
19. MS Emergency Management Agency COVID-19 Fund									
20. MS Electric Cooperatives Broadband COVID-19 Grant Program Fund									
21. COVID-19 Broadband Provider Grant Program Fund									
22. Rental Assistance Grant Program Fund									
23. ICU Infrastructure Fund									
24. Poultry Farmer Stabilization Grant Program Fund									
25. Mississippi Supplemental CFAP Grant Program Fund									
26. Sweet Potato Farm Sustainment Grant Program Fund									
27. Coronavirus Local Fiscal Recovery Fund									
28. Coronavirus State Fiscal Recovery Fund									
29. Federal _____ Other Special (Specify) _____									
30.									
31.									
32.									
33.									
Total Contractual									

REQUEST BY FUNDING SOURCE

Name of Agency : MS State Univ - Water Resources Research Institute

Specify Funding Sources As Shown Below	FY 2021 Actual Amount	% of Line Item	% of Total Budget	FY 2022 Estimated Amount	% of Line Item	% of Total Budget	FY 2023 Requested Amount	% of Line Item	% of Total Budget
1. General _____ State Support Special (Specify) _____									
2. Budget Contingency Fund									
3. Education Enhancement Fund									
4. Health Care Expendable Fund									
5. Tobacco Control Fund									
6. Capital Expense Fund									
7. Working Cash Stabilization Reserve Fund									
8. BP Settlement Fund									
9. Gulf Coast Restoration Fund									
10. Back To Business Mississippi Grant Fund									
11. MS COVID-19 Relief Payment Fund									
12. DFA CARES Act COVID-19 Fund									
13. MS Tourism Recovery Fund									
14. MS Nonprofit Museums Recovery Fund									
15. Equity in Distance Learning Fund									
16. Postsecondary Education COVID-19 Relief Grant Fund									
17. Independent Schools' COVID-19 Assistance Grant Fund									
18. MS Pandemic Response Broadband Availability Grant Program Fund									
19. MS Emergency Management Agency COVID-19 Fund									
20. MS Electric Cooperatives Broadband COVID-19 Grant Program Fund									
21. COVID-19 Broadband Provider Grant Program Fund									
22. Rental Assistance Grant Program Fund									
23. ICU Infrastructure Fund									
24. Poultry Farmer Stabilization Grant Program Fund									
25. Mississippi Supplemental CFAP Grant Program Fund									
26. Sweet Potato Farm Sustainment Grant Program Fund									
27. Coronavirus Local Fiscal Recovery Fund									
28. Coronavirus State Fiscal Recovery Fund									
29. Federal _____ Other Special (Specify) _____									
30.									
31.									
32.									
33.									
Total Commodities									

Name of Agency : MS State Univ - Water Resources Research Institute

Specify Funding Sources As Shown Below	FY 2021 Actual Amount	% of Line Item	% of Total Budget	FY 2022 Estimated Amount	% of Line Item	% of Total Budget	FY 2023 Requested Amount	% of Line Item	% of Total Budget
1. General _____ State Support Special (Specify) _____									
2. Budget Contingency Fund									
3. Education Enhancement Fund									
4. Health Care Expendable Fund									
5. Tobacco Control Fund									
6. Capital Expense Fund									
7. Working Cash Stabilization Reserve Fund									
8. BP Settlement Fund									
9. Gulf Coast Restoration Fund									
10. Back To Business Mississippi Grant Fund									
11. MS COVID-19 Relief Payment Fund									
12. DFA CARES Act COVID-19 Fund									
13. MS Tourism Recovery Fund									
14. MS Nonprofit Museums Recovery Fund									
15. Equity in Distance Learning Fund									
16. Postsecondary Education COVID-19 Relief Grant Fund									
17. Independent Schools' COVID-19 Assistance Grant Fund									
18. MS Pandemic Response Broadband Availability Grant Program Fund									
19. MS Emergency Management Agency COVID-19 Fund									
20. MS Electric Cooperatives Broadband COVID-19 Grant Program Fund									
21. COVID-19 Broadband Provider Grant Program Fund									
22. Rental Assistance Grant Program Fund									
23. ICU Infrastructure Fund									
24. Poultry Farmer Stabilization Grant Program Fund									
25. Mississippi Supplemental CFAP Grant Program Fund									
26. Sweet Potato Farm Sustainment Grant Program Fund									
27. Coronavirus Local Fiscal Recovery Fund									
28. Coronavirus State Fiscal Recovery Fund									
29. Federal _____ Other Special (Specify) _____									
30.									
31.									
32.									
33.									
Total Capital Other Than Equipment									

REQUEST BY FUNDING SOURCE

Name of Agency : MS State Univ - Water Resources Research Institute

Specify Funding Sources As Shown Below	FY 2021 Actual Amount	% of Line Item	% of Total Budget	FY 2022 Estimated Amount	% of Line Item	% of Total Budget	FY 2023 Requested Amount	% of Line Item	% of Total Budget
1. General _____ State Support Special (Specify) _____									
2. Budget Contingency Fund									
3. Education Enhancement Fund									
4. Health Care Expendable Fund									
5. Tobacco Control Fund									
6. Capital Expense Fund									
7. Working Cash Stabilization Reserve Fund									
8. BP Settlement Fund									
9. Gulf Coast Restoration Fund									
10. Back To Business Mississippi Grant Fund									
11. MS COVID-19 Relief Payment Fund									
12. DFA CARES Act COVID-19 Fund									
13. MS Tourism Recovery Fund									
14. MS Nonprofit Museums Recovery Fund									
15. Equity in Distance Learning Fund									
16. Postsecondary Education COVID-19 Relief Grant Fund									
17. Independent Schools' COVID-19 Assistance Grant Fund									
18. MS Pandemic Response Broadband Availability Grant Program Fund									
19. MS Emergency Management Agency COVID-19 Fund									
20. MS Electric Cooperatives Broadband COVID-19 Grant Program Fund									
21. COVID-19 Broadband Provider Grant Program Fund									
22. Rental Assistance Grant Program Fund									
23. ICU Infrastructure Fund									
24. Poultry Farmer Stabilization Grant Program Fund									
25. Mississippi Supplemental CFAP Grant Program Fund									
26. Sweet Potato Farm Sustainment Grant Program Fund									
27. Coronavirus Local Fiscal Recovery Fund									
28. Coronavirus State Fiscal Recovery Fund									
29. Federal _____ Other Special (Specify) _____									
30.									
31.									
32.									
33.									
Total Capital Equipment									

Name of Agency : MS State Univ - Water Resources Research Institute

Specify Funding Sources As Shown Below	FY 2021 Actual Amount	% of Line Item	% of Total Budget	FY 2022 Estimated Amount	% of Line Item	% of Total Budget	FY 2023 Requested Amount	% of Line Item	% of Total Budget
1. General _____ State Support Special (Specify) _____									
2. Budget Contingency Fund									
3. Education Enhancement Fund									
4. Health Care Expendable Fund									
5. Tobacco Control Fund									
6. Capital Expense Fund									
7. Working Cash Stabilization Reserve Fund									
8. BP Settlement Fund									
9. Gulf Coast Restoration Fund									
10. Back To Business Mississippi Grant Fund									
11. MS COVID-19 Relief Payment Fund									
12. DFA CARES Act COVID-19 Fund									
13. MS Tourism Recovery Fund									
14. MS Nonprofit Museums Recovery Fund									
15. Equity in Distance Learning Fund									
16. Postsecondary Education COVID-19 Relief Grant Fund									
17. Independent Schools' COVID-19 Assistance Grant Fund									
18. MS Pandemic Response Broadband Availability Grant Program Fund									
19. MS Emergency Management Agency COVID-19 Fund									
20. MS Electric Cooperatives Broadband COVID-19 Grant Program Fund									
21. COVID-19 Broadband Provider Grant Program Fund									
22. Rental Assistance Grant Program Fund									
23. ICU Infrastructure Fund									
24. Poultry Farmer Stabilization Grant Program Fund									
25. Mississippi Supplemental CFAP Grant Program Fund									
26. Sweet Potato Farm Sustainment Grant Program Fund									
27. Coronavirus Local Fiscal Recovery Fund									
28. Coronavirus State Fiscal Recovery Fund									
29. Federal _____ Other Special (Specify) _____									
30.									
31.									
32.									
33.									
Total Vehicles									

Name of Agency : MS State Univ - Water Resources Research Institute

Specify Funding Sources As Shown Below	FY 2021 Actual Amount	% of Line Item	% of Total Budget	FY 2022 Estimated Amount	% of Line Item	% of Total Budget	FY 2023 Requested Amount	% of Line Item	% of Total Budget
1. General _____ State Support Special (Specify) _____									
2. Budget Contingency Fund									
3. Education Enhancement Fund									
4. Health Care Expendable Fund									
5. Tobacco Control Fund									
6. Capital Expense Fund									
7. Working Cash Stabilization Reserve Fund									
8. BP Settlement Fund									
9. Gulf Coast Restoration Fund									
10. Back To Business Mississippi Grant Fund									
11. MS COVID-19 Relief Payment Fund									
12. DFA CARES Act COVID-19 Fund									
13. MS Tourism Recovery Fund									
14. MS Nonprofit Museums Recovery Fund									
15. Equity in Distance Learning Fund									
16. Postsecondary Education COVID-19 Relief Grant Fund									
17. Independent Schools' COVID-19 Assistance Grant Fund									
18. MS Pandemic Response Broadband Availability Grant Program Fund									
19. MS Emergency Management Agency COVID-19 Fund									
20. MS Electric Cooperatives Broadband COVID-19 Grant Program Fund									
21. COVID-19 Broadband Provider Grant Program Fund									
22. Rental Assistance Grant Program Fund									
23. ICU Infrastructure Fund									
24. Poultry Farmer Stabilization Grant Program Fund									
25. Mississippi Supplemental CFAP Grant Program Fund									
26. Sweet Potato Farm Sustainment Grant Program Fund									
27. Coronavirus Local Fiscal Recovery Fund									
28. Coronavirus State Fiscal Recovery Fund									
29. Federal _____ Other Special (Specify) _____									
30.									
31.									
32.									
33.									
Total Wireless Communication Devs.									

REQUEST BY FUNDING SOURCE

Name of Agency : MS State Univ - Water Resources Research Institute

Specify Funding Sources As Shown Below	FY 2021 Actual Amount	% of Line Item	% of Total Budget	FY 2022 Estimated Amount	% of Line Item	% of Total Budget	FY 2023 Requested Amount	% of Line Item	% of Total Budget
1. General _____ State Support Special (Specify) _____	351,676	100.00		351,676	100.00		368,170	100.00	
2. Budget Contingency Fund									
3. Education Enhancement Fund									
4. Health Care Expendable Fund									
5. Tobacco Control Fund									
6. Capital Expense Fund									
7. Working Cash Stabilization Reserve Fund									
8. BP Settlement Fund									
9. Gulf Coast Restoration Fund									
10. Back To Business Mississippi Grant Fund									
11. MS COVID-19 Relief Payment Fund									
12. DFA CARES Act COVID-19 Fund									
13. MS Tourism Recovery Fund									
14. MS Nonprofit Museums Recovery Fund									
15. Equity in Distance Learning Fund									
16. Postsecondary Education COVID-19 Relief Grant Fund									
17. Independent Schools' COVID-19 Assistance Grant Fund									
18. MS Pandemic Response Broadband Availability Grant Program Fund									
19. MS Emergency Management Agency COVID-19 Fund									
20. MS Electric Cooperatives Broadband COVID-19 Grant Program Fund									
21. COVID-19 Broadband Provider Grant Program Fund									
22. Rental Assistance Grant Program Fund									
23. ICU Infrastructure Fund									
24. Poultry Farmer Stabilization Grant Program Fund									
25. Mississippi Supplemental CFAP Grant Program Fund									
26. Sweet Potato Farm Sustainment Grant Program Fund									
27. Coronavirus Local Fiscal Recovery Fund									
28. Coronavirus State Fiscal Recovery Fund									
29. Federal _____ Other Special (Specify) _____									
30.									
31.									
32.									
33.									
Total Subsidies	351,676		100.00%	351,676		100.00%	368,170		100.00%

REQUEST BY FUNDING SOURCE

Name of Agency : MS State Univ - Water Resources Research Institute

Specify Funding Sources As Shown Below	FY 2021 Actual Amount	% of Line Item	% of Total Budget	FY 2022 Estimated Amount	% of Line Item	% of Total Budget	FY 2023 Requested Amount	% of Line Item	% of Total Budget
1. General _____ State Support Special (Specify) _____	351,676	100.00		351,676	100.00		368,170	100.00	
2. Budget Contingency Fund									
3. Education Enhancement Fund									
4. Health Care Expendable Fund									
5. Tobacco Control Fund									
6. Capital Expense Fund									
7. Working Cash Stabilization Reserve Fund									
8. BP Settlement Fund									
9. Gulf Coast Restoration Fund									
10. Back To Business Mississippi Grant Fund									
11. MS COVID-19 Relief Payment Fund									
12. DFA CARES Act COVID-19 Fund									
13. MS Tourism Recovery Fund									
14. MS Nonprofit Museums Recovery Fund									
15. Equity in Distance Learning Fund									
16. Postsecondary Education COVID-19 Relief Grant Fund									
17. Independent Schools' COVID-19 Assistance Grant Fund									
18. MS Pandemic Response Broadband Availability Grant Program Fund									
19. MS Emergency Management Agency COVID-19 Fund									
20. MS Electric Cooperatives Broadband COVID-19 Grant Program Fund									
21. COVID-19 Broadband Provider Grant Program Fund									
22. Rental Assistance Grant Program Fund									
23. ICU Infrastructure Fund									
24. Poultry Farmer Stabilization Grant Program Fund									
25. Mississippi Supplemental CFAP Grant Program Fund									
26. Sweet Potato Farm Sustainment Grant Program Fund									
27. Coronavirus Local Fiscal Recovery Fund									
28. Coronavirus State Fiscal Recovery Fund									
29. Federal _____ Other Special (Specify) _____									
30.									
31.									
32.									
33.									
TOTAL	351,676		100.00%	351,676		100.00%	368,170		100.00%

SPECIAL FUNDS DETAIL

MS State Univ - Water Resources Research Institute (445-00)

Name of Agency

S. STATE SUPPORT SPECIAL FUNDS		(1) Actual Revenues FY 2021	(2) Estimated Revenues FY 2022	(3) Requested Revenues FY 2023
Source (Fund Number)	Detailed Description of Source			
Budget Contingency Fund	BCF - Budget Contingency Fund			
Education Enhancement Fund	EEF - Education Enhancement Fund			
Health Care Expendable Fund	HCEF - Health Care Expendable Fund			
Tobacco Control Fund	TCF - Tobacco Control Fund			
Capital Expense Fund	CEF - Capital Expense Fund			
Working Cash Stabilization Reserve Fund	WCSRF - Working Cash Stabilization Reserve Fund			
BP Settlement Fund	BPSF - BP Settlement Fund			
Gulf Coast Restoration Fund	GCRF - Gulf Coast Restoration Fund			
Back To Business Mississippi Grant Fund	BTBMGF - Back To Business Mississippi Grant Fund			
MS COVID-19 Relief Payment Fund	MCRPF - MS COVID-19 Relief Payment Fund			
DFA CARES Act COVID-19 Fund	DCACF - DFA CARES Act COVID-19 Fund			
MS Tourism Recovery Fund	MTRF - MS Tourism Recovery Fund			
MS Nonprofit Museums Recovery Fund	MNMRF - MS Nonprofit Museums Recovery Fund			
Equity in Distance Learning Fund	EIDLF - Equity in Distance Learning Fund			
Postsecondary Education COVID-19 Relief Grant Fund	PECMRGF - Postsecondary Education COVID-19 Relief Grant Fund			
Independent Schools' COVID-19 Assistance Grant Fund	ISCAGF - Independent Schools' COVID-19 Assistance Grant Fund			
MS Pandemic Response Broadband Availability Grant Program Fund	MPRBAGPF - MS Pandemic Response Broadband Availability Grant Program Fund			
MS Emergency Management Agency COVID-19 Fund	MEMACF - MS Emergency Management Agency COVID-19 Fund			
MS Electric Cooperatives Broadband COVID-19 Grant Program Fund	MECBCGPF - MS Electric Cooperatives Broadband COVID-19 Grant Program Fund			
COVID-19 Broadband Provider Grant Program Fund	CBPGPF - COVID-19 Broadband Provider Grant Program Fund			
Rental Assistance Grant Program Fund	RAGPF - Rental Assistance Grant Program Fund			
ICU Infrastructure Fund	IIF - ICU Infrastructure Fund			
Poultry Farmer Stabilization Grant Program Fund	PFSGPF - Poultry Farmer Stabilization Grant Program Fund			
Mississippi Supplemental CFAP Grant Program Fund	MSCGPF - Mississippi Supplemental CFAP Grant Program Fund			
Sweet Potato Farm Sustainment Grant Program Fund	SPFSGPF - Sweet Potato Farm Sustainment Grant Program Fund			
Coronavirus Local Fiscal Recovery Fund	CLFRF - Coronavirus Local Fiscal Recovery Fund			
Coronavirus State Fiscal Recovery Fund	CSFRF - Coronavirus State Fiscal Recovery Fund			
State Support Special Fund TOTAL				
STATE SUPPORT SPECIAL FUND LAPSE				

A. FEDERAL FUNDS *		Percentage Match Requirement FY 2022 FY 2023	(1) Actual Revenues FY 2021	(2) Estimated Revenues FY 2022	(3) Requested Revenues FY 2023
Source (Fund Number)	Detailed Description of Source				
	Cash Balance-Unencumbered				
Federal Fund TOTAL					

SPECIAL FUNDS DETAIL

MS State Univ - Water Resources Research Institute (445-00)

Name of Agency

B. OTHER SPECIAL FUNDS (NON-FED'L)		(1) Actual Revenues FY 2021	(2) Estimated Revenues FY 2022	(3) Requested Revenues FY 2023
Source (Fund Number)	Detailed Description of Source			
	Cash Balance-Unencumbered			
Other Special Fund TOTAL				

SECTIONS S + A + B TOTAL			
---------------------------------	--	--	--

C. TREASURY FUND/BANK ACCOUNTS *			(1) Reconciled Balance as of 6/30/21	(2) Balance as of 6/30/22	(3) Balance as of 6/30/23
Name of Fund/Account	Fund/Account Number	Name of Bank (If Applicable)			

* Any non-federal funds that have restricted uses must be identified and narrative of restrictions attached.

**NARRATIVE OF SPECIAL FUNDS DETAIL AND TREASURY
FUND/BANK ACCOUNTS**

MS State Univ - Water Resources Research Institute (445-00)

Name of Agency

CONTINUATION AND EXPANDED TOTAL REQUEST

MS State Univ - Water Resources Research Institute (445-00)

SUMMARY OF ALL PROGRAMS

Name of Agency

Program

	FY 2021 Actual				
	(1) General	(2) State Support Special	(3) Federal	(4) Other Special	(5) Total
Salaries,Wages & Fringe					
Travel					
Contractual Services					
Commodities					
Other Than Equipment					
Equipment					
Vehicles					
Wireless Communication Devices					
Subsidies, Loans & Grants	351,676				351,676
Total	351,676				351,676
No. of Positions (FTE)					

	FY 2022 Estimated				
	(6) General	(7) State Support Special	(8) Federal	(9) Other Special	(10) Total
Salaries,Wages & Fringe					
Travel					
Contractual Services					
Commodities					
Other Than Equipment					
Equipment					
Vehicles					
Wireless Communication Devices					
Subsidies, Loans & Grants	351,676				351,676
Total	351,676				351,676
No. of Positions (FTE)					

	FY 2023 Increase/Decrease for Continuation				
	(11) General	(12) State Support Special	(13) Federal	(14) Other Special	(15) Total
Salaries,Wages & Fringe					
Travel					
Contractual Services					
Commodities					
Other Than Equipment					
Equipment					
Vehicles					
Wireless Communication Devices					
Subsidies, Loans & Grants	16,494				16,494
Total	16,494				16,494
No. of Positions (FTE)					

Note: FY2023 Total Request = FY2022 Estimated + FY2023 Incr(Decr) for Continuation + FY2023 Expansion/Reduction of Existing Activities + FY2023 New Activities.

CONTINUATION AND EXPANDED TOTAL REQUEST

MS State Univ - Water Resources Research Institute (445-00)

SUMMARY OF ALL PROGRAMS

Name of Agency	Program				
	FY 2023 Expansion/Reduction of Existing Activities				
	(16) General	(17) State Support Special	(18) Federal	(19) Other Special	(20) Total
Salaries,Wages & Fringe					
Travel					
Contractual Services					
Commodities					
Other Than Equipment					
Equipment					
Vehicles					
Wireless Communication Devices					
Subsidies, Loans & Grants					
Total					
No. of Positions (FTE)					

	FY 2023 New Activities (*)				
	(21) General	(22) State Support Special	(23) Federal	(24) Other Special	(25) Total
Salaries,Wages & Fringe					
Travel					
Contractual Services					
Commodities					
Other Than Equipment					
Equipment					
Vehicles					
Wireless Communication Devices					
Subsidies, Loans & Grants					
Total					
No. of Positions (FTE)					

	FY 2023 Total Request				
	(26) General	(27) State Support Special	(28) Federal	(29) Other Special	(30) Total
Salaries,Wages & Fringe					
Travel					
Contractual Services					
Commodities					
Other Than Equipment					
Equipment					
Vehicles					
Wireless Communication Devices					
Subsidies, Loans & Grants	368,170				368,170
Total	368,170				368,170
No. of Positions (FTE)					

Note: FY2023 Total Request = FY2022 Estimated + FY2023 Incr(Decr) for Continuation + FY2023 Expansion/Reduction of Existing Activities + FY2023 New Activities.

SUMMARY OF PROGRAMS
FORM MBR-1-03sum

MS State Univ - Water Resources Research Institute (445-00)

Name of Agency

FUNDING REQUESTED FISCAL YEAR 2023

PROGRAM		GENERAL	ST. SUPP. SPECIAL	FEDERAL	OTHER SPECIAL	TOTAL
1.	Research & Technology Transfer	368,170				368,170
	Summary of All Programs	368,170				368,170

CONTINUATION AND EXPANDED REQUEST

Program 1 of 1

MS State Univ - Water Resources Research Institute (445-00)

Research & Technology Transfer

Name of Agency

Program

	FY 2021 Actual				
	(1) General	(2) State Support Special	(3) Federal	(4) Other Special	(5) Total
Salaries,Wages & Fringe					
Travel					
Contractual Services					
Commodities					
Other Than Equipment					
Equipment					
Vehicles					
Wireless Communication Devices					
Subsidies, Loans & Grants	351,676				351,676
Total	351,676				351,676
No. of Positions (FTE)					

	FY 2022 Estimated				
	(6) General	(7) State Support Special	(8) Federal	(9) Other Special	(10) Total
Salaries,Wages & Fringe					
Travel					
Contractual Services					
Commodities					
Other Than Equipment					
Equipment					
Vehicles					
Wireless Communication Devices					
Subsidies, Loans & Grants	351,676				351,676
Total	351,676				351,676
No. of Positions (FTE)					

	FY 2023 Increase/Decrease for Continuation				
	(11) General	(12) State Support Special	(13) Federal	(14) Other Special	(15) Total
Salaries,Wages & Fringe					
Travel					
Contractual Services					
Commodities					
Other Than Equipment					
Equipment					
Vehicles					
Wireless Communication Devices					
Subsidies, Loans & Grants	16,494				16,494
Total	16,494				16,494
No. of Positions (FTE)					

Note: FY2023 Total Request = FY2022 Estimated + FY2023 Incr(Decr) for Continuation + FY2023 Expansion/Reduction of Existing Activities + FY2023 New Activities.

CONTINUATION AND EXPANDED REQUEST

Program 1 of 1

MS State Univ - Water Resources Research Institute (445-00)

Research & Technology Transfer

Name of Agency

Program

	FY 2023 Expansion/Reduction of Existing Activities				
	(16) General	(17) State Support Special	(18) Federal	(19) Other Special	(20) Total
Salaries,Wages & Fringe					
Travel					
Contractual Services					
Commodities					
Other Than Equipment					
Equipment					
Vehicles					
Wireless Communication Devices					
Subsidies, Loans & Grants					
Total					
No. of Positions (FTE)					

	FY 2023 New Activities (*)				
	(21) General	(22) State Support Special	(23) Federal	(24) Other Special	(25) Total
Salaries,Wages & Fringe					
Travel					
Contractual Services					
Commodities					
Other Than Equipment					
Equipment					
Vehicles					
Wireless Communication Devices					
Subsidies, Loans & Grants					
Total					
No. of Positions (FTE)					

	FY 2023 Total Request				
	(26) General	(27) State Support Special	(28) Federal	(29) Other Special	(30) Total
Salaries,Wages & Fringe					
Travel					
Contractual Services					
Commodities					
Other Than Equipment					
Equipment					
Vehicles					
Wireless Communication Devices					
Subsidies, Loans & Grants	368,170				368,170
Total	368,170				368,170
No. of Positions (FTE)					

Note: FY2023 Total Request = FY2022 Estimated + FY2023 Incr(Decr) for Continuation + FY2023 Expansion/Reduction of Existing Activities + FY2023 New Activities.

PROGRAM DECISION UNITS

MS State Univ - Water Resources Research Institute

1 - Research & Technology Transfer

Name of Agency	A	B	C	D	E	F	Program Name	
	FY 2022 Appropriated	Escalations By DFA	Non-Recurring Items	SREB Salary Level Progress	Total Funding Change	FY 2023 Total Request		
EXPENDITURES								
SALARIES								
GENERAL								
ST. SUP. SPECIAL								
FEDERAL								
OTHER								
TRAVEL								
GENERAL								
ST. SUP. SPECIAL								
FEDERAL								
OTHER								
CONTRACTUAL								
GENERAL								
ST. SUP. SPECIAL								
FEDERAL								
OTHER								
COMMODITIES								
GENERAL								
ST. SUP. SPECIAL								
FEDERAL								
OTHER								
CAPTITAL-OTE								
GENERAL								
ST. SUP. SPECIAL								
FEDERAL								
OTHER								
EQUIPMENT								
GENERAL								
ST. SUP. SPECIAL								
FEDERAL								
OTHER								
VEHICLES								
GENERAL								
ST. SUP. SPECIAL								
FEDERAL								
OTHER								
WIRELESS DEV								
GENERAL								
ST. SUP. SPECIAL								
FEDERAL								
OTHER								
SUBSIDIES	351,676			16,494	16,494	368,170		
GENERAL	351,676			16,494	16,494	368,170		
ST. SUP. SPECIAL								
FEDERAL								
OTHER								
TOTAL	351,676			16,494	16,494	368,170		
FUNDING								
GENERAL FUNDS	351,676			16,494	16,494	368,170		
ST. SUP. SPCL FUNDS								
FEDERAL FUNDS								
OTHER SP. FUNDS								
TOTAL	351,676			16,494	16,494	368,170		
POSITIONS								
GENERAL FTE								
ST. SUP. SPCL. FTE								
FEDERAL FTE								
OTHER SP. FTE								
TOTAL								
PRIORITY LEVEL :								
				1				

PROGRAM NARRATIVE

Program Data Collected in Accordance with the Mississippi Performance Budget and Strategic Planning Act of 1994
(To Accompany Form MBR-1-03)

MS State Univ - Water Resources Research Institute

1 - Research & Technology Transfer

Name of Agency

Program Name

I. Program Description:

Mississippi Water Resources Research Institute. The Mississippi Water Resources Research Institute (MWRRI) was authorized by Mississippi's Governor Paul B. Johnson in 1964 and was designated as a state research institute by the Mississippi Legislature in 1983. The State Water Resources Research Act Program, authorized by section 104 of the Water Resources Research Act of 1984, coalesced MWRRI with 53 other Water Resources Research Institutes or Centers, one in each of the 50 states as well as the District of Columbia, Puerto Rico, the U.S. Virgin Island, and Guam. The aim of this Federal-State partnership is four-fold:

1. Plan, facilitate, and conduct research to aid in the resolution of State and regional water problems
2. Promote technology transfer and the dissemination and application of research results
3. Provide for the training of scientist and engineers through their participation in research, and
4. Provide for competitive grants to be awarded under the Water Resources Research Act

Center of Excellence for Watershed Management. On April 9, 2013, MSU through the MWRRI was designated by Region 4 of the U.S. Environmental Protection Agency (EPA Region 4) and the Mississippi Department of Environmental Quality (MDEQ) as a Center of Excellence for Watershed Management with the formal signing of a Memorandum of Understanding (MOU) by these parties. The MOU acknowledges that the MWRRI had demonstrated to the satisfaction of EPA and MDEQ that it has the capacity and capability to identify and address the needs of local watershed stakeholders and that it has support at the appropriate levels of MSU. It also specifies the Center of Excellence to serve as the point of contact and primary coordinating entity for colleges and universities in Mississippi. The primary purpose of the Center of Excellence is to utilize the diverse talent and expertise of colleges and universities by providing hands on practical products and services to help communities identify watershed-based problems and develop and implement locally-sustainable solutions. The MOU also guides the Center of Excellence to actively seek out watershed-based stakeholders that need assistance with project development and management, research and monitoring, education and outreach, engineering design, computer mapping, legal and policy review, and other water resource planning and implementation needs. Annual commitments of the MWRRI to maintain the designation are also identified in the MOU.

MWRRI Mission. a) planning, facilitating, and conducting research to aid in the resolution of State and regional water problems; b) promoting technology transfer and the dissemination and application of research results; c) providing for the training of scientists and engineers through their participation in research; d) providing for competitive grants to be awarded under the Water Resources Research Act; and e) cooperating with the United States Geological Survey to support, coordinate, and facilitate research through the Annual Base Grants, National Competitive Grants, Coordination Grants, and in operating the national Institutes for Water Resources-United States Geological Survey Student Internship Program.

Activities to Support Mission. The following activities were accomplished in support of MWRRI's mission during FY2020:

- a. Planning, facilitating, and conducting research to aid in the resolution of State and regional water problems
- b. Promoting technology transfer and the dissemination and application of research results
- c. Peer Reviewed Journal Publications
- d. Providing for the training of scientists and engineers through their participation in research
- e. Providing for competitive grants to be awarded under the Water Resources Research Act; and
- f. Cooperating with the United States Geological Survey to support, coordinate, and facilitate research through the Annual Base Grants, national Competitive Grants, Coordination Grants, and in operating the national Institutes for Water Resources-United States Geological Survey Student Internship Program.

II. Program Objective:

PROGRAM NARRATIVE

Program Data Collected in Accordance with the Mississippi Performance Budget and Strategic Planning Act of 1994
(To Accompany Form MBR-1-03)

Program Objectives:

1. Serve public and private interests in the conservation, development, and use of water resources.
2. Provide training opportunities in higher education whereby skilled professionals become available to serve government and private sectors alike.
3. Assist planning and regulatory bodies at the local, state, regional, and federal levels.
4. Communicate research findings to potential users in a form that encourages quick comprehension and direct application to water related problems.

Current Program Activities:

1. Facilitation of Watershed-based Planning and Implementation Projects
2. Generation of Applied Water Resources Research
3. Technology and Research Transfer through MSU's Cooperative Extension and REACH Programs
4. Support of Implementation of Conjunctive Water Management Strategies in the Mississippi Delta
5. Support and Facilitation of Low-Impact Development and Green Infrastructure Projects
6. Alternative Water Supplies for Economic Development
7. Facilitation of Collaborative Partnerships with Other Institutions of Higher Learning
8. Testing for Lead in Drinking Water with University of Mississippi Researchers
9. Investigation of Microplastic Pollution in the Mississippi River System
10. Evaluating the impact of Hydrological Extremes on Coastal Wetland Vegetation with the University of Southern Mississippi.

III. Current program activities as supported by the funding in Columns 6-15 (FY 2022 & FY 2023 Increase/Decrease for continuations) of MBR-1-03 and designated Budget Unit Decisions columns of MBR-1-03-A:

(D) SREB Salary Level Progress:

Board approved 1/6th SREB salary increase funds to be allocated through the allocation model.

Elements of Quality Program Design

For the Evaluation of Requests to Fund New Programs or New Activity in an Existing Program
(To Accompany Form MBR-1-03A)

PROGRAM PERFORMANCE MEASURES

Program Data Collected in Accordance with the Mississippi Performance Budget and Strategic Planning Act of 1994

MS State Univ - Water Resources Research Institute (445-00)

1 - Research & Technology Transfer

Name of Agency

PROGRAM NAME

PROGRAM OUTPUTS: (This is the measure of the process necessary to carry on the goals and objectives of this program. This is the volume produced, i.e., how many people served, how many documents generated.)

	FY 2021 APPRO	FY 2021 ACTUAL	FY 2022 ESTIMATED	FY 2023 PROJECTED
1 Annual list of MWRRI's water resources research priorities	1.00	1.00	1.00	1.00
2 Annually prepare and distribute RFP for 104b grant program	1.00	1.00	1.00	1.00
3 Number of competitive external research proposals developed or co-facilitated by MWRRI that received external funding	3.00	14.00	4.00	4.00
4 Documentation in annual report submitted to MDEQ and EPA of status of MOU annual work plan commitments	1.00	1.00	1.00	1.00
5 Number of peer reviewed journal publications	2.00	26.00	10.00	10.00
6 Number of externally funded contracts	1.00	13.00	2.00	2.00
7 Number of published abstracts	5.00	0.00	2.00	2.00
8 Number of Ph.D. and M.S. candidates served as a major advisor	1.00	2.00	1.00	1.00
9 Number of Ph.D and M.S. candidates served as a graduate committee member	3.00	16.00	16.00	16.00

PROGRAM EFFICIENCIES: (This is the measure of the cost, unit cost or productivity associated with a given outcome or output. This measure indicates linkage between services and funding, i.e., cost per investigation, cost per student or number of days to complete investigation.)

	FY 2021 APPRO	FY 2021 ACTUAL	FY 2022 ESTIMATED	FY 2023 PROJECTED
1 Amount of federal funding received to support 104b-funded projects	90,000.00	87,684.00	90,000.00	90,000.00
2 Amount of state funding received to support 104b-funded projects	240,000.00	240,000.00	240,000.00	240,000.00
3 Amount of funding awarded by MWRRI or used administratively to support 104b projects	330,000.00	78,416.00	330,000.00	330,000.00
4 Cost of annual conference	30,000.00	0.00	30,000.00	30,000.00
5 Amount of conference sponsorships	1,000.00	0.00	1,000.00	1,000.00
6 Percentage of competitive external research proposal developed or co-facilitated by MWRRI that received external funding	33.00	650.00	50.00	50.00

PROGRAM OUTCOMES: (This is the measure of the quality or effectiveness of the services provided by this program. This measure provides an assessment of the actual impact or public benefit of your agency's actions. This is the results produced, i.e., increased customer satisfaction by x% within a 12-month period, reduce the number of traffic fatalities due to drunk drivers within a 12-month period.

	FY 2021 APPRO	FY 2021 ACTUAL	FY 2022 ESTIMATED	FY 2023 PROJECTED
1 Number of competitive external research proposals developed or co-facilitated by MWRRI that received external funding	2.00	13.00	2.00	2.00
2 Number of research proposals received for potential 104b funding	1.00	10.00	3.00	3.00
3 Percentage of conference favorable comments from evaluation form	95.00	0.00	90.00	90.00
4 Amount of competitive external research awards through external funding sources	100,000.00	4,166,505.00	250,000.00	250,000.00
5 Amount of contractual funding received for externally-funded projects	50,000.00	1,452,914.00	100,000.00	100,000.00
6 Number of dissertations or theses	1.00	3.00	1.00	1.00

PROGRAM PERFORMANCE MEASURES

Program Data Collected in Accordance with the Mississippi Performance Budget and Strategic Planning Act of 1994

MS State Univ - Water Resources Research Institute (445-00)1 - Research & Technology Transfer

Name of Agency

PROGRAM NAME

7 Number of annual conference attendees

130.00

0.00

120.00

120.00

PROGRAM 3% GENERAL FUND REDUCTION AND NARRATIVE EXPLANATION

MS State Univ - Water Resources Research Institute (445-00)

	Fiscal Year 2022 Funding			FY 2022 GF PERCENT REDUCED
	Total Funds	Reduced Amount	Reduced Funding Amount	

Program Name: (1) Research & Technology Transfer	General	351,676	(10,550)	341,126	(3.00%)
	State Support Special				
	Federal				
	Other Special				
	TOTAL	351,676	(10,550)	341,126	
	Narrative Explanation:				

Program Name: (99) Summary of All Programs				
General	351,676	(10,550)	341,126	(3.00%)
State Support Special				
Federal				
Other Special				
TOTAL	351,676	(10,550)	341,126	

BOARD OF TRUSTEES OF STATE INSTITUTIONS OF HIGHER LEARNING MEMBERS

MS State Univ - Water Resources Research Institute (445-00)

Name of Agency

A. Explain Rate and manner in which board members are reimbursed:

Board members are reimbursed through the Institution of Higher Learning System Administration budget with a per diem of \$40 plus expenses.

B. Estimated number of meetings FY 2022:

12 (Twelve)

C. Board Members	City, Town, Residence	Appointed By	Date Appointed	Length of Term
1. Mr. Tom Duff	Hattiesburg, MS	Bryant	02/08/2015	9 years
2. Dr. Alfred E. McNair, Jr.	Ocean Springs, MS	Bryant	05/08/2015	9 years
3. Dr. J. Walt Starr	Columbus, MS	Bryant	05/08/2015	9 years
4. Mr. Chip Morgan	Leland, MS	Bryant	05/08/2015	9 years
5. Bruce Martin	Meridian, MS	Bryant	05/08/2018	9 years
6. Dr. Steven Cunningham	Hattiesburg, MS	Bryant	05/08/2018	9 years
7. Gee Ogletree	Ridgeland, MS	Bryant	05/08/2018	9 years
8. Jeanne Carter Luckey	Ocean Springs, MS	Bryant	05/08/2018	9 years
9. Dr. Ormella Cummings	Tupelo, MS	Reeves	05/18/2021	9 years
10. Gregory Rader	Columbus, MS	Reeves	05/18/2021	9 years
11. Mr. Hal Parker	Bolton, MS	Reeves	05/18/2021	9 years
12. Teresa Hubbard	Oxford, MS	Reeves	05/18/2021	9 years

Identify Statutory Authority (Code Section or Executive Order Number)*

Constitutional Amendment 213A of the Constitution of the State of Mississippi.

*If Executive Order, please attach copy.

SCHEDULE B
CONTRACTUAL SERVICES

MS State Univ - Water Resources Research Institute (445-00)
Name of Agency

MINOR OBJECT OF EXPENDITURE	(1) Actual Expenses FY Ending June 30, 2021	(2) Estimated Expenses FY Ending June 30, 2022	(3) Requested for FY Ending June 30, 2023
-----------------------------	--	---	--

Grand Total <i>(Enter on Line 1-B of Form MBR-1)</i>			
--	--	--	--

Funding Summary:			
General Funds			
State Support Special Funds			
Federal Funds			
Other Special Funds			
Total Funds			

SCHEDULE C
COMMODITIES

MS State Univ - Water Resources Research Institute (445-00)
Name of Agency

MINOR OBJECT OF EXPENDITURE	(1) Actual Expenses FY Ending June 30, 2021	(2) Estimated Expenses FY Ending June 30, 2022	(3) Requested for FY Ending June 30, 2023
-----------------------------	--	---	--

Grand Total <i>(Enter on Line 1-C of Form MBR-1)</i>			
--	--	--	--

Funding Summary:			
General Funds			
State Support Special Funds			
Federal Funds			
Other Special Funds			
Total Funds			

SCHEDULE D-1
CAPITAL OUTLAY
OTHER THAN EQUIPMENT

MS State Univ - Water Resources Research Institute (445-00)
Name of Agency

MINOR OBJECT OF EXPENDITURE	(1) Actual Expenses FY Ending June 30, 2021	(2) Estimated Expenses FY Ending June 30, 2022	(3) Requested for FY Ending June 30, 2023
Grand Total <i>(Enter on Line 1-D-1 of Form MBR-1)</i>			
Funding Summary:			
General Funds			
State Support Special Funds			
Federal Funds			
Other Special Funds			
Total Funds			

SCHEDULE D-2
CAPITAL OUTLAY EQUIPMENT

MS State Univ - Water Resources Research Institute (445-00)

Name of Agency

EQUIPMENT BY ITEM	Act. FY Ending June 30, 2021		Est. FY Ending June 30, 2022		Req. FY Ending June 30, 2023	
	No. of Units	Total Cost	No. of Units	Total Cost	No. of Units	Total Cost

Grand Total <i>(Enter on Line 1-D-2 of Form MBR-1)</i>			
--	--	--	--

Funding Summary:			
General Funds			
State Support Special Funds			
Federal Funds			
Other Special Funds			
Total Funds			

SCHEDULE D-3
PASSENGER/WORK VEHICLES

MS State Univ - Water Resources Research Institute (445-00)

Name of Agency

MINOR OBJECT OF EXPENDITURE	Vehicle Inventory June 30, 2021	Act. FY Ending June 30, 2021		Est. FY Ending June 30, 2022		Req. FY Ending June 30, 2023	
		No. of Units	Total Cost	No. of Units	Total Cost	No. of Units	Total Cost

GRAND TOTAL <i>(Enter on Line 1-D-3 of Form MBR-1)</i>			
--	--	--	--

Funding Summary:			
General Funds			
State Support Special Funds			
Federal Funds			
Other Special Funds			
Total Funds			

SCHEDULE D-4
WIRELESS COMMUNICATION DEVICES

MS State Univ - Water Resources Research Institute (445-00)

Name of Agency

MINOR OBJECT OF EXPENDITURE	Device Inventory June 30, 2021	Act. FY Ending June 30, 2021		Est. FY Ending June 30, 2022		Req. FY Ending June 30, 2023	
		No. of Devices	Actual Cost	No. of Devices	Estimated Cost	No. of Devices	Requested Cost

Grand Total <i>(Enter on Line 1-D-4 of Form MBR-1)</i>			
--	--	--	--

Funding Summary:			
General Funds			
State Support Special Funds			
Federal Funds			
Other Special Funds			
Total Funds			

SCHEDULE E
SUBSIDIES, LOANS & GRANTS

MS State Univ - Water Resources Research Institute (445-00)

Name of Agency

MINOR OBJECT OF EXPENDITURE	(1) Actual Expenses FY Ending June 30, 2021	(2) Estimated Expenses FY Ending June 30, 2022	(3) Requested for FY Ending June 30, 2023
-----------------------------	--	---	--

E. Other, Transfers (67000xxx-67199xxx, 67998xxx, 68500xxx-68860xxx, 70045xxx-70080xxx, 80000xxx-80500xxx)			
Cost Share on University Projects	351,676	351,676	368,170
Total	351,676	351,676	368,170
Grand Total <i>(Enter on Line 1-E of Form MBR-1)</i>	351,676	351,676	368,170
Funding Summary:			
General Funds	351,676	351,676	368,170
State Support Special Funds			
Federal Funds			
Other Special Funds			
Total Funds	351,676	351,676	368,170

NARRATIVE
2023 BUDGET REQUEST

MS State Univ - Water Resources Research Institute (445-00)

Name of Agency

MWRRI is requesting level funding with an SREB Salary Level Progress of 4.7% for an increase of \$16,494.

OUT-OF-STATE TRAVEL
FISCAL YEAR 2023

MS State Univ - Water Resources Research Institute (445-00)

Name of Agency

Note: All expenditures recorded on this form must be totaled and said total must agree with the out-of-state travel amount indicated for FY 2021 on Form Mbr-1, line 1.A.2.b.

Employee's Name	Destination	Purpose	Travel Cost	Funding Source
-----------------	-------------	---------	-------------	----------------

Total Out of State Cost

FEES, PROFESSIONAL AND OTHER SERVICES

MS State Univ - Water Resources Research Institute (445-00)

Name of Agency

TYPE OF FEE AND NAME OF VENDOR	Retired w/ PERS	(1) Actual Expenses FY Ending June 30, 2021	(2) Estimated Expenses FY Ending June 30, 2022	(3) Requested Expenses FY Ending June 30, 2023	Fund Source
--------------------------------	-----------------------	--	---	---	-------------

GRAND TOTAL

VEHICLE PURCHASE DETAILS

MS State Univ - Water Resources Research Institute (445-00)

Name of Agency

Year	Model	Person(s) Assigned To	Vehicle Purpose/Use	Replacement Or New?	FY2023 Req. Cost
------	-------	-----------------------	---------------------	------------------------	---------------------

TOTAL VEHICLE REQUEST

**VEHICLE INVENTORY
AS OF JUNE 30, 2021**

MS State Univ - Water Resources Research Institute (445-00)

Name of Agency

Vehicle Type	Vehicle Description	Model Year	Model	Person(s) Assigned To	Purpose/Use	Tag Number	Mileage on 6-30-2021	Average Miles per Year	Replacement Proposed	
									FY2022	FY2023

VEHICLE POOL MEMBER LIST
2023 BUDGET REQUEST

MS State Univ - Water Resources Research Institute (445-00)

Name of Agency

**PRIORITY OF DECISION UNITS
FISCAL YEAR 2023**

MS State Univ - Water Resources Research Institute (445-00)

Name of Agency

Program	Decision Unit	Object	Amount
Priority # 1			
	Program # 1: Research & Technology Transfer		
	SREB Salary Level Progress		
		Subsidies	16,494
		Totals	16,494
		General Funds	16,494

CAPITAL LEASES

MS State Univ - Water Resources Research Institute (445-00)

Name of Agency

VENDOR/ ITEM LEASED	Original Date of Lease	Original No. of Months of Lease	No. of Months Remaining on 6-30-21	Last Payment Date	Interest Rate	Amount of Each Payment			Total of Payments To Be Made					
						Actual FY 2021			Estimated FY 2022			Requested FY 2023		
						Principal	Interest	Total	Principal	Interest	Total	Principal	Interest	Total

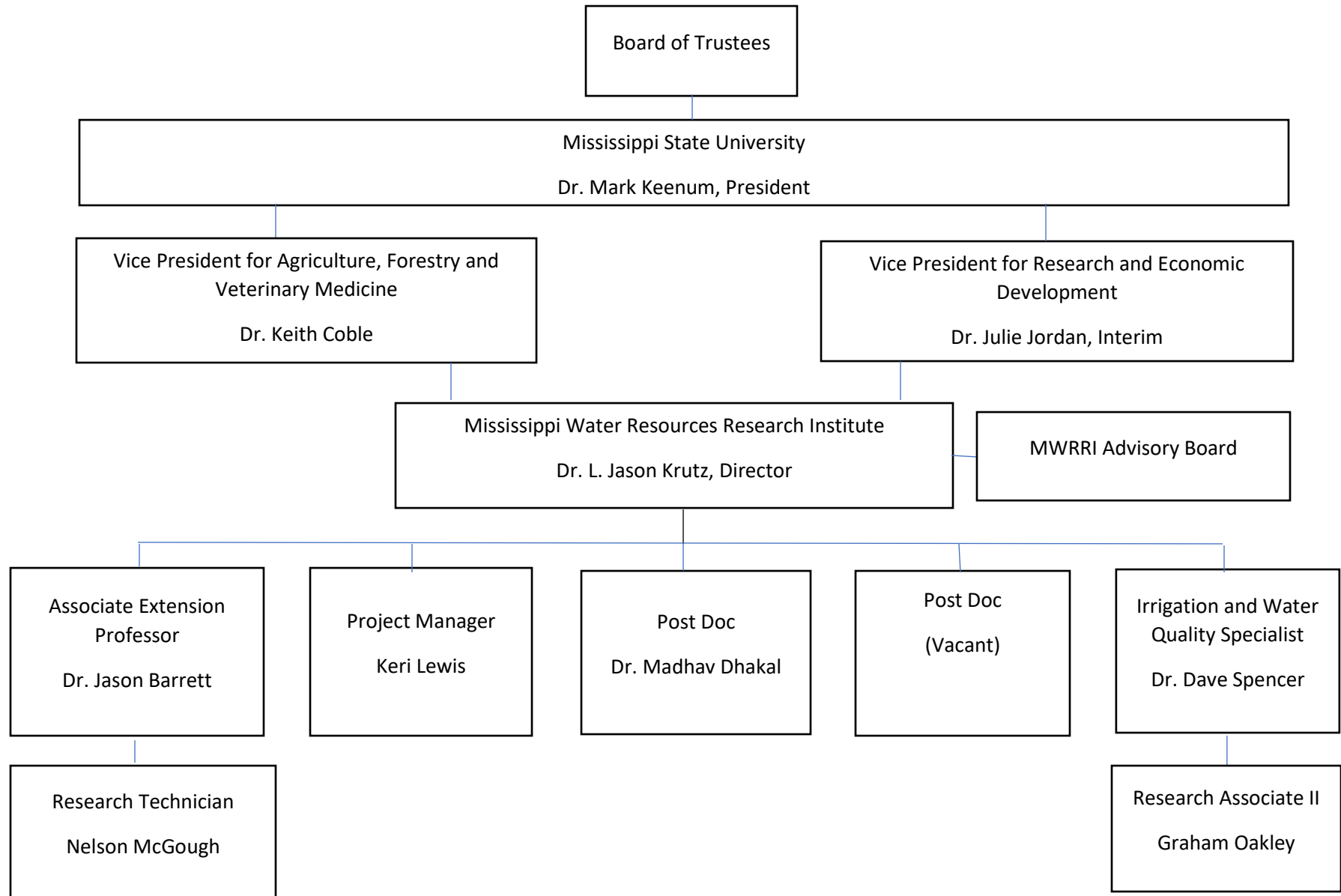
Summary of 3% General Fund Program Reduction to FY 2022 Appropriated Funding by Major Object

MS State Univ - Water Resources Research Institute (445-00)

Name of Agency

Major Object	FY2022 General Fund Reduction	EFFECT ON FY2022 STATE SUPPORT SPECIAL FUNDS	EFFECT ON FY2022 FEDERAL FUNDS	EFFECT ON FY2022 OTHER SPECIAL FUNDS	TOTAL 3% REDUCTIONS
SALARIES, WAGES, FRINGE					
TRAVEL					
CONTRACTUAL					
COMMODITIES					
OTHER THAN EQUIPMENT					
EQUIPMENT					
VEHICLES					
WIRELESS COMM. DEVS.					
SUBSIDIES, LOANS, ETC	(10,550)				(10,550)
TOTALS	(10,550)				(10,550)

Organizational Chart for the Mississippi Water Resources Research Institute



Agency Revenue Source Report - FY2021 Data

As Required by HB 831, 2015 Legislative Session

And SB 2387, 2016 Legislative Session

Agency Name MS State University - Water Resources Research Institute

Budget Year FY2021

State Support Sources Amount Received
 General Funds 351,676

State Support Special Funds: Amount Received
 Education Enhancement Funds
 Health Care Expendable Funds
 Tobacco Control Funds
 Capital Expense Funds
 Budget Contingency Funds
 Working Cash Stabilization Reserve Funds

List all Federal Funds at its most specific level, such as an office or division, include name of grant, grantor, not the federal department.

Federal Funds	Amount Received	Action or results promised in order to receive funds
Federal Fund #1	Fund Summaries should be available October 1, 2021	
Federal Fund #2		
Description of any Maintenance of Effort agreements entered into with any federal agency or subdivision thereof		

Special Funds Amount Received
 Special Fund #1
 Special Fund #2

Add Rows for Additional Special Funds

Revenue from Tax, Fine or Fee Assessed

Tax, Fine or Fee #1	Amount Assessed	NA
Copy Entire Section to Add New Item	Amount Collected	Fund Summaries should be available October 1, 2021
	Authority to Collect	
	Method of Determining Assessment	NA
	Method of Collection	
	Amt. & Purpose for which Expended	

Amount	Purpose
Fund Summaries should be available October 1, 2021	

Amount Transferred to General Fund	
Authority for Transfer to General Fund	
Amount Transferred to Another Entity	
Authority for Transfer to Other Entity	
Name of Other Entity	
Fiscal Year-Ending Balance	